

## TAKASAGO

### RVA Series Rocker Type Isolation Valve

*Inert Valves, 2-way & 3-way, 1.6 mm Orifice, Manifold Mount*

#### DESCRIPTION

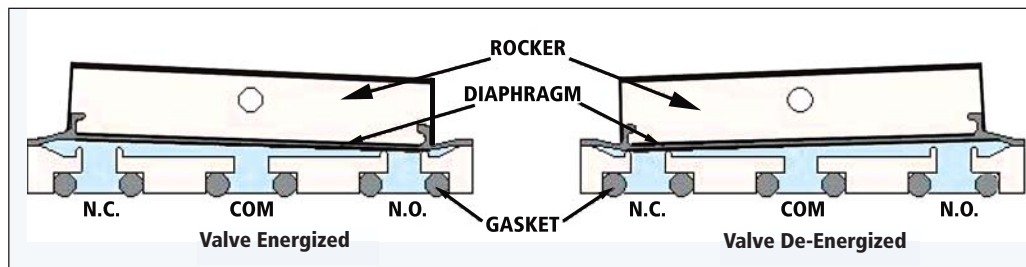
Model series RVA rocker type diaphragm valves manifold mount and have all ports on the bottom side.

The small rectangular footprint (16 x 27 mm) minimizes manifold size and reduces internal passage volume.

Standard materials in contact with the process fluid are PEEK valve body and perfluoroelastomer diaphragm and seal.

Pumped volume is quite small as there is no volumetric change in the valve chamber with actuation of the rocker.

The valve has a built-in voltage dropping circuit that drops the voltage to a holding voltage a short time after the valve is energized. This reduces heat generation and reduces energy consumption. Mainly, it allows the valve to operate in a continuous duty mode.



#### SPECIFICATIONS

##### GENERAL

Model Number/Type:

RVA-2K-MF1GA- 2-way, N.C.

RVA-02K-MF1GA- 2-way, N.O.

RVA-3K-MF1GA- 3-way

Orifice Diameter-  $\phi$ 1.6 mm

Internal Volume (Excluding Gasket Area of Flow Path): 65  $\mu$ l

Port Connection- Manifold mount, perfluoroelastomer gasket/o-ring seal

Operating Pressure Range All Ports: -90 to 250 kPa (-26.6 inches of mercury to 36.3 psi)

Media Temperature Range: 5-50°C (41-122°F)

Ambient Temperature Range: 5-50°C (41-122°F)

Power Consumption: 5.5W (inrush), 1W (holding)

Duty Cycle: Continuous

Insulation Class: Class B

Dielectric Strength: 1500 VAC for 60 seconds

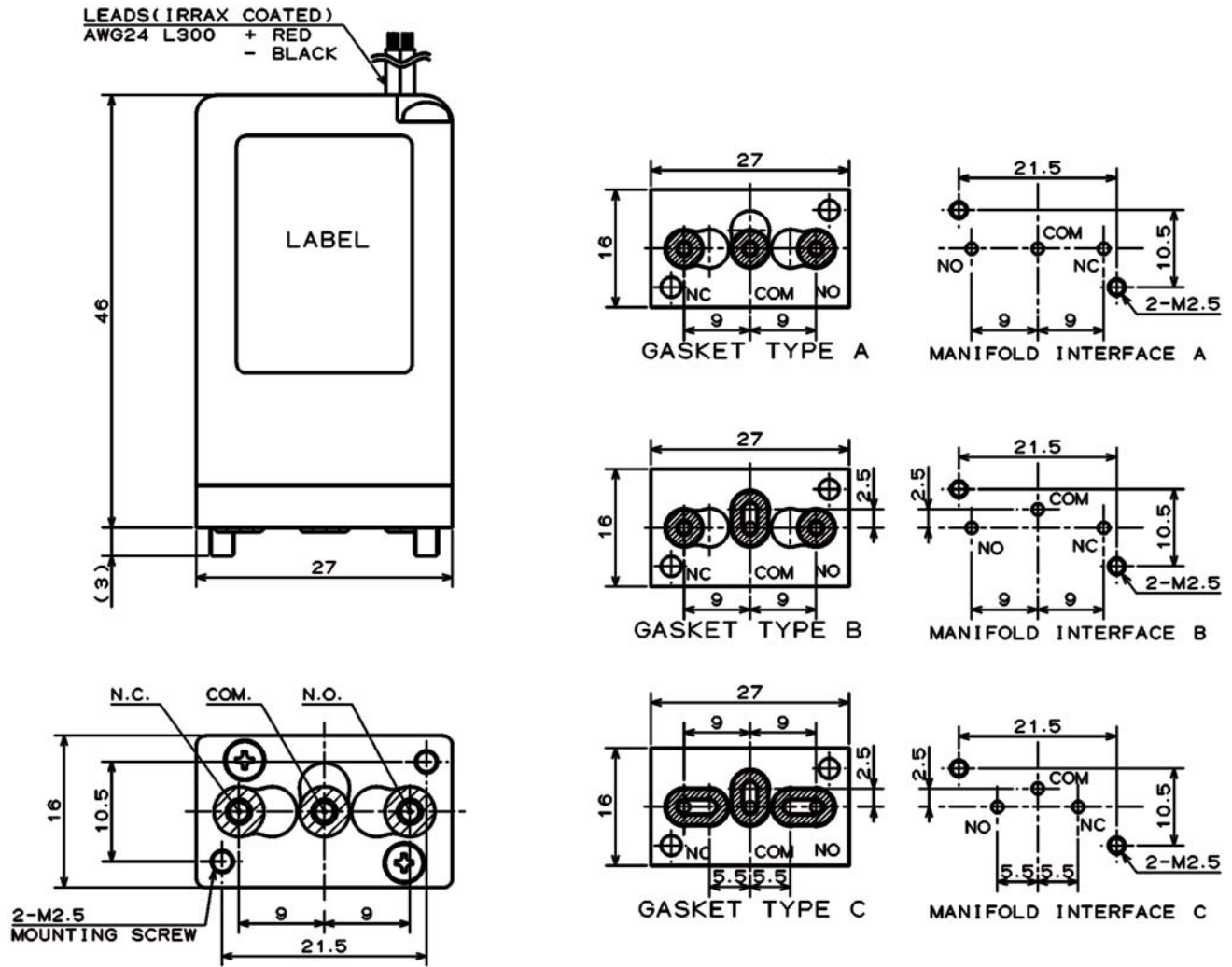
Wetted Materials:

Valve Body- PEEK (PPS optional)

Diaphragm & Gaskets/O-Rings- Perfluoroelastomer (FPM or EPDM optional)

**Note: This product has a circuit that controls voltage by timer. It is not recommended to have on/off cycles greater than 3 Hz**

## DIMMENSIONS (MM)



## ORDERING INFORMATION

**SELECT MODEL NUMBER AND VOLTAGE**

**EXAMPLE: RVA-2K-MFGA12V**

Model Number	Description
RVA-2K-MF1GA(12V, 24V)	2-Way Normally Closed Rocker Isolation Valve
RVA-02K-MF1GA(12V, 24V)	2-Way Normally Open Rocker Isolation Valve
RVA-3K-MF1GA(12V, 24V)	3-Way Normally Closed Rocker Isolation Valve
Consult factory for Optional Wetted Materials	