

DG10

Flow Sight Glass with Threaded Connections

- **Standard models with fully clear bore or drip tube, flap or rotor optionally available**
- **Materials: Cast iron, cast steel or stainless steel**
- **For pipe sizes from 1/4" to 2"**
- **For liquid temperatures up to 300 °F / 150 °C, higher ratings up to 536 °F / 280 °C optionally available**
- **Pressure rating: 232 psi / 16 bar, higher ratings optionally available**
- **Process connection available with NPT or G thread**



Description:

DG10 sight glasses are used to visually monitor the flow of liquids in pipe systems.

Depending on the type of liquid and flow volume, these devices are used with a fully clear bore or with a flap or rotor (for transparent liquids).

DG10 sight glasses permit reliable monitoring of the function and performance of single devices or entire systems.


Typical Applications:


Because they are available in a variety of materials and designs, DG10 sight glasses can be used in almost any kind of pipe system.

In North & South America Find Our Products On-Line at Clark Solutions:

www.clarksol.com



 **PKP Process Instruments Inc.**
10 Brent Drive · Hudson, MA 01749
Tel: 978-212-0006 · Fax: 978-568-0060
Email: sales@clarksol.com · Internet: www.clarksol.com

 **PKP Prozessmesstechnik GmbH**
Borsigstraße 24 · D-65205 Wiesbaden
Tel: 49 (0) 6122-7055-0 · Fax: 49 (0) 6122-7055-50
Email: info@pkp.de · Internet: www.pkp.de

Models:

- DG10.S:** Standard model with fully clear bore, sizes 1-1/4" and above with drip tube (can be installed in any position)
- DG10.K:** with flap (can only be installed horizontally or for upward vertical flows)
- DG10.RK** with rotor made of POM (Tmax. 248 °F / 120 °C, can be installed in any position)
- DG10.RP** with rotor made of PTFE (Tmax. 500 °F / 260 °C, can be installed in any position)

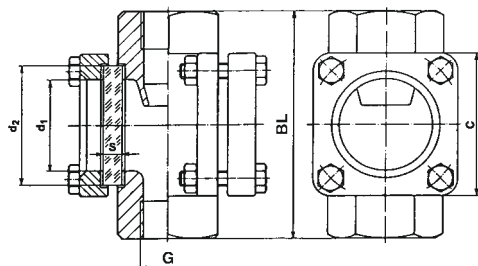
Housing Materials (having contact with monitored liquid):

- DG10.x.G:** Cast iron A48-40B / GG 25 (EN-GJL-250)
- DG10.x.S:** Cast steel A216 Gr. WCC / GS-C 25 (WN 1.0619)
- DG10.x.E:** Stainless steel AISI 316 / WN 1.4408

Sight Glass Materials:

- DG10.x.x.N:** Soda-lime glass (Tmax. 300 °F / 150 °C)
- DG10.x.x.B:** Borosilicate glass (Tmax. 536 °F / 280 °C)

Dimensions:



Cast iron (DG10.x.G)					
Connection (female thread)	BL (inch / mm)	d1 (inch / mm)	d2 (inch / mm)	S (inch / mm) 232 psi / 16 bar	C (inch / mm)
1/4"	3.94 / 100	1.26 / 32	1.77 / 45	0.39 / 10	2.76 / 70
1/2"					
3/4"	4.72 / 120	1.89 / 48	2.48 / 63	0.39 / 10	3.45 / 85
1"					
1-1/4"	6.30 / 160	2.56 / 65	3.15 / 80	0.47 / 12	4.57 / 116
1-1/2"					
2"	7.09 / 180	3.15 / 80	3.94 / 100	0.59 / 15	4.72 / 120

Cast steel (DG10.x.S) or stainless steel (DG10.x.E)							
Con-nection	BL (inch / mm)	d1 (inch / mm)	d2 (inch / mm)	S (inch/mm)			C (inch / mm)
				232 psi / 16 bar	363 psi / 25 bar	580 psi / 40 bar	
1/4"							2.76 / 70
3/8"	3.94 / 100	1.89 / 48	2.48 / 63	0.39 / 10	0.47 / 12	0.59 / 15	3.54 / 90
1/2"							
3/4"							2.76 / 70
1"	5.12 / 130	2.56 / 65	3.15 / 80	0.47 / 12	0.59 / 15	0.79 / 20	3.35 / 85
1-1/4"	6.30 / 160						4.57 / 116
1-1/2"	6.30 / 160	2.56 / 65	3.15 / 80	0.47 / 12	0.59 / 15	0.79 / 20	4.57 / 116
2"	9.06 / 130	3.15 / 80	3.94 / 100	0.59 / 15	0.79 / 20	0.98 / 25	4.72 / 120

In North & South America Find Our Products On-Line at Clark Solutions:
www.clarksol.com

Model Coding:

Order Number: **DG10.** **RK.** **E.** **B.** **25.** **16.** **0.** **0**

Flow Sight Glass with Threaded Connections (Female)

Models:

- S = Standard design with fully clear bore (sizes 1-1/4" and above with drip tube)
- K = with flap
- RK = with plastic rotor (POM)
- RP = with plastic rotor (PTFE)

Housing Materials:

- G = Cast iron
- S = Cast steel
- E = Stainless steel

Sight Glass Materials:

- N = Soda-lime glass
- B = Borosilicate glass

Process connection:

- | | |
|-------------------|----------------------------|
| 08N = 1/4" NPTF | 08 = G 1/4 female thread |
| 10N = 3/8" NPTF | 10 = G 3/8 female thread |
| 15N = 1/2" NPTF | 15 = G 1/2 female thread |
| 20N = 3/4" NPTF | 20 = G 3/4 female thread |
| 25N = 1" NPTF | 25 = G 1 female thread |
| 32N = 1-1/4" NPTF | 32 = G 1-1/4 female thread |
| 40N = 1-1/2" NPTF | 40 = G 1-1/2 female thread |
| 50N = 2" NPTF | 50 = G 2 female thread |

Pressure Rating:

- 16 = 232 psi / 16 bar (Standard)
- 25 = 363 psi / 25 bar (in cast steel or stainl. steel only)
- 40 = 580 psi / 40 bar (in cast steel or stainl. steel only)

Options:

- 0 = None
- 9 = Please specify in writing

Special Models:

- 0 = None
- 9 = Please specify in writing

Technical Specifications:

Materials: Housing and Sight Glass: see description, gaskets: graphite (other gasket materials available upon request)

max. pressure: 232 psi / 16 bar Standard
 363 psi / 25 bar and 580 psi / 40 bar optional

max. temperature:

DG10.S/K...: 300 °F / 150 °C (536 °F / 280 °C with borosilicate glass)

DG10.RK...: 248 °F / 120 °C

DG10.RP...: 300 °F / 150 °C (500 °F / 260 °C with borosilicate glass)