

BOXER

16K Series Diaphragm Pump

Liquid Flow Rate to 150 ml/min

DESCRIPTION

The 16K series is a miniature liquid diaphragm pump intended for wide range of applications such as medical diagnostics, pharmaceutical, food processing, ink jet printing and water treatment industries.

As standard the pump includes inlet pulsation chamber to ensure smooth liquid transfer.

Motor options include iron core, coreless and BLDC (2 versions).

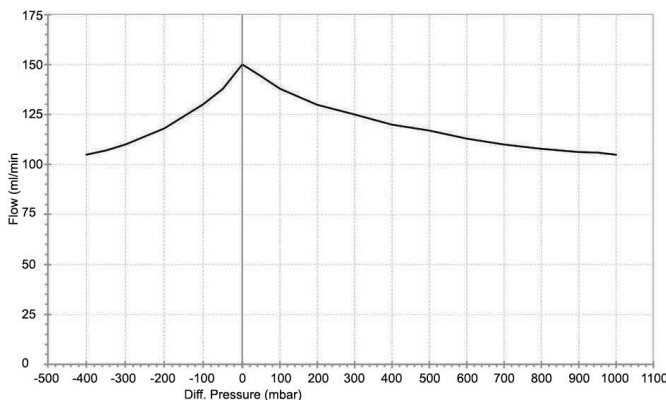


SPECIFICATIONS

GENERAL

- Free Flow: 150 ml/m
- Max Pressure: 1.0 bar (14.5 PSI)
- Max Vacuum: -400 mbar (11.8 inches Hg)
- Motor:
 - Iron Core Motor- 12 & 24 VDC
 - Coreless Motor- 6 VDC
 - Brushless- 24 VDC
- Max. Operating Temp.: 50°C
- Max Media Temp.: 100°C
- Housing Material: PPS (Polyphenylene Sulfide)
- Diaphragm Material: EPDM
- Valve Material: EPDM
- Tubing Barb Size: 4.7 mm OD
- Weight: Iron Core, 60g; Coreless, 65g; Brushless, 63g

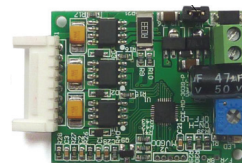
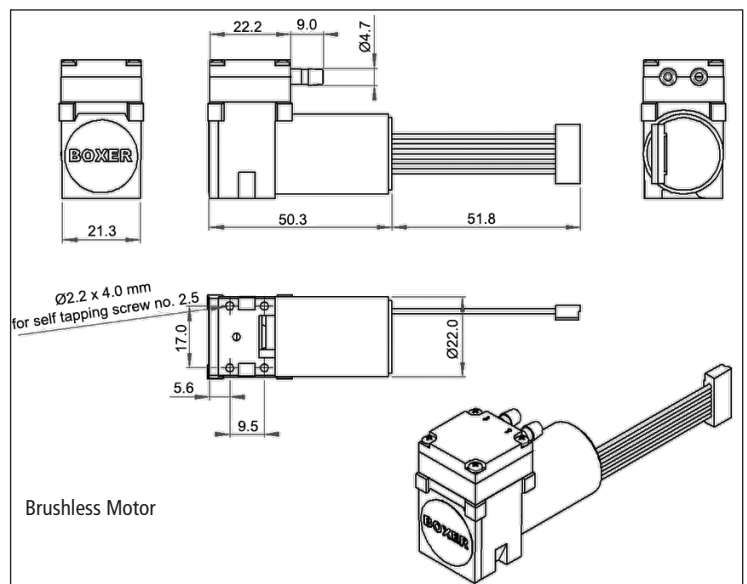
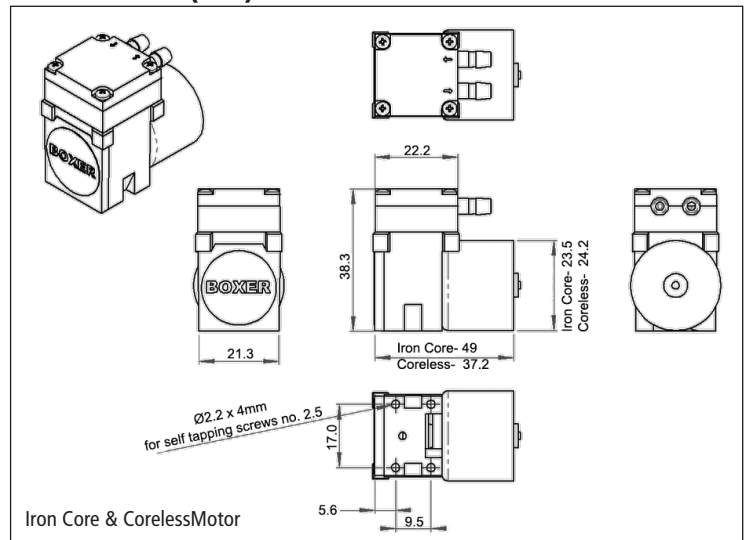
FLOW CURVE



ORDERING INFORMATION

Model	Motor Type	Nominal Pump Voltage (VDC)	Nominal Motor Voltage (VDC)
16005.000	Iron Core	12	12
16006.000	Iron Core	24	24
16016.000	Coreless	6	12
16008.000	Brushless	24	24
6900.005	Brushless DC Driver Board		

DIMENSIONS (MM)



Model 6900.005 Driver Board for Brushless Motors
The board is equipped with a trimmer which allows the regulation of the pump's speed i.e. flow.