

**GOTEC****EMX-25 Miniature Piston Pump**

*Solenoid Operated, Flow to 12 L/H (3.17 GPH)  
Pressure to 2.5 Bar (36.3 PSI)*

**DESCRIPTION**

Model EMX-25 oscillating piston pump is a great solution for low volume liquid pumping applications where small size is a critical factor.

The piston size and the length of its displacement define the flow rate. The pressure limits itself automatically. The pump will run without damage when the liquid flow is stopped momentarily.

The precision ground machined elements, piston and bushing, guarantee minimum wear and exceptional component life. With only stainless steel connectors, piston and spring and PTFE or PPS valve tips in contact with the media, the pumps are suitable for a wide range of fluids and applications.

**SPECIFICATIONS****GENERAL**

Supply Voltage- 12, 24, 110, 230VAC, 50/60 Hz, diode rectified

Wetted Pump Materials-303, 304, 316, & 431 SS

Connectors: AISI 431 SS (1.4057)

Piston: AISI 431 + Cr (1.4057 + Cr)

Springs: AISI 316 (1.4401)

Valves- PTFE or PPS

Solenoid Housing- Molded epoxy

Maximum Pressure- 2.5 bar (36.3 PSI)

Maximum Flow- Standard Vers., 12 L/H (2.38 GPH)

Viscosity Range- 1.....600mm<sup>2</sup>/s

Particle Tolerance- 100 mesh

DC Operation: Optional model PD-106 DC driver board

Electrical Connections- Male DIN Spade (3 x 6.3 mm x .08 mm), ISO/DIN 43650 form B

Power Consumption- 18 W

Insulation: Class F-100% ED / 20 [°C] with heat sink (Class H on request), Class I

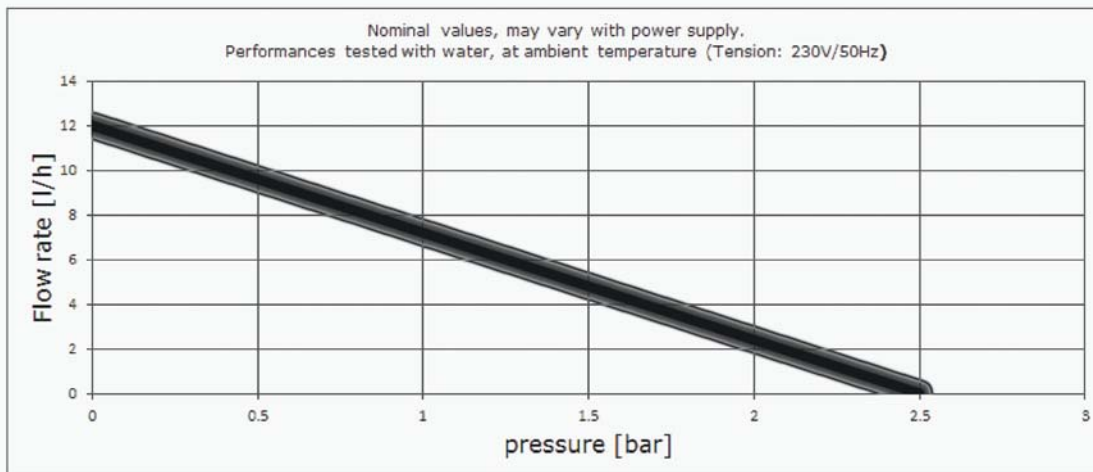
Operating Factor- 100% continuous@ 68°F

Ambient/Process Temperature Range- 1 to 50°C (33.8 to 122°F)

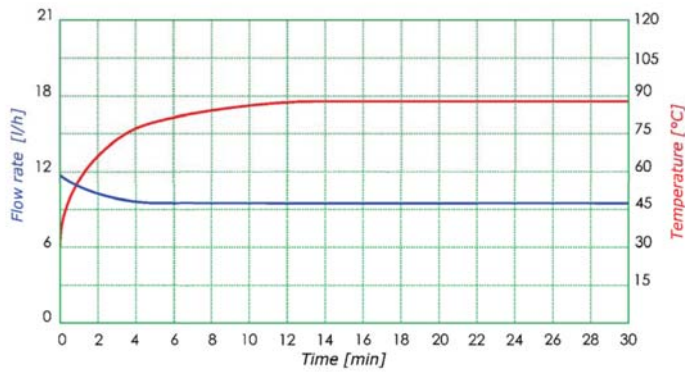
Noise level (1m): open flow = ~35 [dB(A)],  
Max. pressure = ~29 [dB(A)]

Optional Mounting- Integral Heat Sink w/2ea 1/8" Holes  
3/4" on center (see drawing)

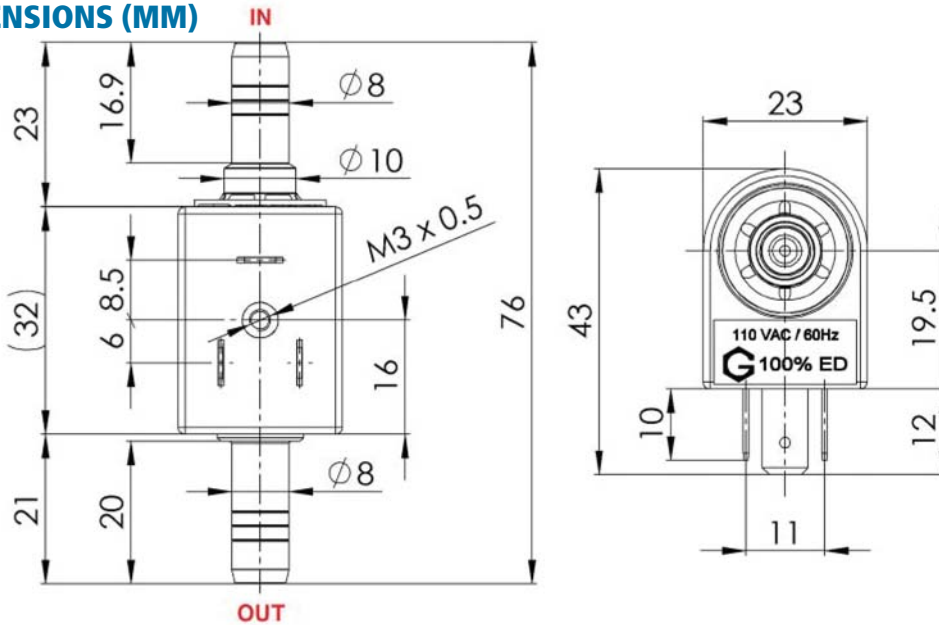
Weight- 95 g (0.2 lb)

**FLOW CURVES**

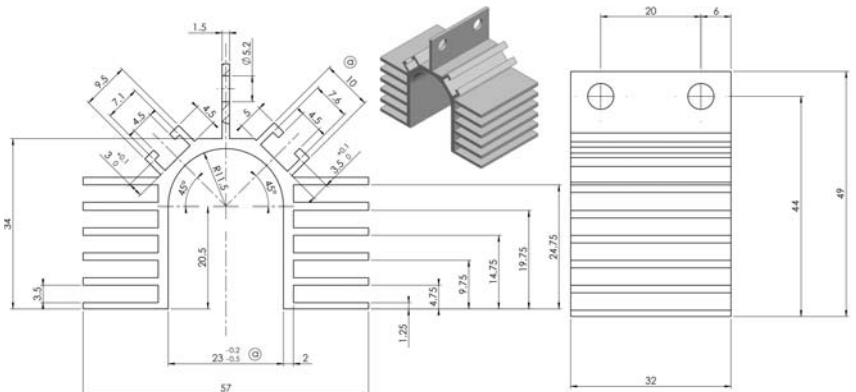
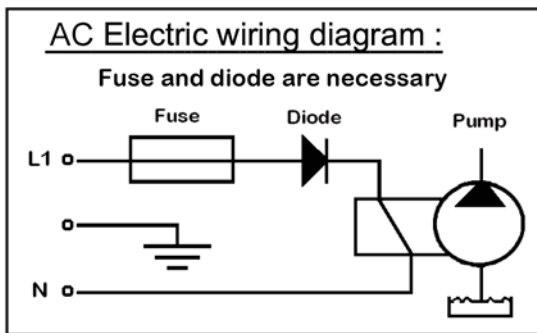
## EFFECT OF COIL TEMPERATURE RISE ON FLOW RATE



## DIMENSIONS (MM)



## ELECTRICAL



## ORDERING INFORMATION

**ABCDEF**  
**EMX25TC24VS2V**

A Model	B Valve Material	C Piston Coating	D Voltage	E Elec. Conn.	F #Valves
*EMX25=5/16" Hose Barb *Consult us with your OEM fitting requirements	T=Teflon P= PPS	C=Chrome	12V=12V 110V=110V 24V=24V 230V=230V	S=DIN Spade	2V=2Valves

Options			
Model	Description	Model	Description
Model PD-106	DC driver board, 9-35 VDC in, 9-35V pulsed DC out	106628	Heat Sink
Model 1N5406	Diode		