

pump are disregarded.

- The pump has been disassembled or modified by anyone other than a Fluid-o-Tech (or authorized by Fluid-o-Tech) engineer or repaired with non-original components.
- The pump operated dry or in cavitation throttled/undersized inlet or filter)
- Solid extraneous particles are found in the pump.
- Evident signs of operating pressure higher than 16 bar (230 psi) - (high pressure may compromise the integrity of the internal parts of the pump and cause leaking) - are found.
- The pump has been utilized for an application for which it was not intended to be used where the operating conditions and/or the pumped liquid were incompatible with the pump itself and such application has not been specifically approved by Fluid-o-Tech.
- In case of pumps equipped with relief valve, the operating pressure results to be 3 bar below the relief valve setting. In this case the internal parts get hot, scale develops and the hydraulic performances drop

CERTIFICATIONS

The product complies with the following Directives:

- Directive 94/9/EC of the European Parliament and of the Council, of 23rd March 1994, related to equipments and protection devices intended to be used in potentially explosive environments - ATEX.
- D.M. 174/04 of the Health Ministry, of 6th April

2004, on materials and devices that may be used in fixed catching, treatment, adduction and distribution installations of waters destined for human use.

- EC Regulation n.1935/2004 of the European Parliament and the Council of 27th October 2004 on materials and articles intended to come into contact with food products and for which there are migration tests with photo A as required by DM n.338 of 22nd July 1998 Encl.1 Chapter 1.

Groups equipped with motors satisfy the requirements of the following Directives for the member states' legislations approaching:

- Directive 2004/108/EC of the European Parliament and of the Council, of 15th Dec 2004, related to the Electromagnetic Compatibility – EMC.
- Directive 2006/95/EC of the European Parliament and of the Council, of 12th Dec 2006, related to the electric material intended to be used within specified voltage limits – DBT.
- Directive 94/9/EC of the European Parliament and of the Council, of 23rd March 1994, related to equipments and protection devices intended to be used in potentially explosive environments - ATEX.
- Directive 2011/65/EU of the European Parliament and of the Council, of 08th June 2011, on the restriction of the use of certain hazardous substances in electrical and electronic equipment – RoHS.

Distributor Contact:

Clark Solutions
10 Brent Drive
Hudson, MA 01749
Tel: 978-568-3400
Website: www.clarksol.com
e-mail: sales@clarksol.com



INSTRUCTION MANUAL

MAGNET DRIVE ROTARY VANE PUMPS TM 30-400 AND TH 500-1000 SERIES

INSTALLATION

The pump has to be installed exclusively by authorized staff. Handle with care.

WARNING

For food applications the pumps (even when NSF listed or WRAS approved) need to be sterilized by circulating water at 80 °C (176 F) for at least 20 minutes. The water used for this operation must not be reused, either during the sterilization or later, but must be discharged.

For speed higher than 2500 rpm the internal pins must be in PTFE instead of stainless steel. Stainless steel pins will damage the vane and cause the pump to fail. The circuit should be carefully flushed before starting the pump.

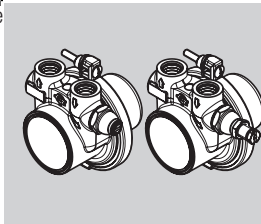
It's recommended pulling out the two protection sponge caps placed on the inlet and outlet ports of the pump only immediately before mounting the fittings and the pipes, in order to avoid the incidental entrance of any solid extraneous object which might damage the internal components of the pump.

The TM/TH series rotary vane pumps look identical in their exterior aspect, although the flow rates are different. For this reason, in case of replacement, you should make sure that the new pump is compatible with the previous model you have, giving close attention to the flow rate, pressure and mounting. Changing the pump with a model of different capacity may damage the system and the pump itself.

If continuous operation is needed, the unit has to be mounted in an airy space in order to dissipate the heat produced by the motor. To avoid vibrations of mechanical parts and noise, it is advisable to mount the motor with rubber shock-absorbing supports. Particular care must be taken when connecting the pump with fittings in order to avoid leaks. If a sealing fluid or Teflon tape is used, make sure to avoid any quantity of it to fall into the pump.



Find out more

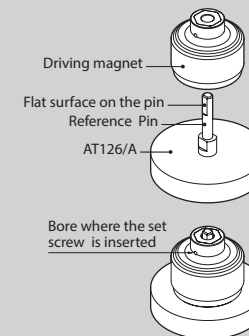


ASSEMBLING THE MAGNET ONTO THE MOTOR SHAFT

Motors with flat shaft ("D" type)

- 1 Tighten the set screw in its seat in the magnet holder until it protrudes from the bore of the brass insert in order to verify that there are no imperfections in the thread which might stop the set screw before it is able to block the magnet on the rotor shaft.
- 2 Untighten the set screw until it does not protrude any longer into the bore where the shaft will be inserted.
- 3 Place the magnet on the tool AT126/A with the bore where the set screw sits in correspondence with the flat surface of the "D" pin (fig. 1).
- 4 Tighten the set screw until it touches the pin, but do not tighten so much to make the extraction of the magnet difficult. The pin should not be scratched by the set screw when extracting the shaft.
- 5 Remove the magnet and place it on the motor shaft. In such conditions the set screw, protruding slightly from the internal diameter of the bore

Fig. 1



Fluid-o-Tech reserves the right to alter the specifications indicated in this catalogue at any time and without prior notice.

Fluid-o-Tech srl
Via Leonardo da Vinci, 40
20094 Corsico, Milano, Italy
Tel. +39 02 9995 01
Fax +39 02 9995 0999
info@fluidotech.it

Fluid-o-Tech Int'l Inc.
161 Atwater St.
Plantsville CT (USA) 06479
Tel. +1 (860) 276 9270
Fax +1 (860) 620 0193
info@fluid-o-tech.com

Fluid-o-Tech Int'l Inc. Japan
203, 2-17-19, Ebara, Shinagawa
Tokyo 142-0063, Japan
Tel. +81 (0) (3) 3783 9660
Fax +81 (0) (3) 3783 9661
k.kato@fluidotech.com

Fluid-o-Tech Asia (Beijing) Co., Ltd
Jingwei Industrial Zone,
Beifang Huairou, Beijing, 101400, PRC
Tel. +86 (0) (10) 6168 4650
Fax +86 (0) (10) 6168 4651
info@fluidotech-asia.com

in the brass bushing, prevents an incorrectly oriented assembling onto the motor shaft.

- Place the unit vertically on the bench with the magnet facing downwards (see fig. 2) to place the magnet in the correct position. Tighten the set screw with a max torque of 2.0 Nm.

Motors with shaft key seat and "TMA"/"TMAS" series driving magnets

- Tighten the set screw in its seat in the magnet holder until it protrudes from the bore of the brass insert in order to verify that there are no imperfections in the thread which might stop the set screw before it is able to block the magnet on the rotor shaft.
- Untighten the set screw until it does not protrude any longer into the bore where the shaft will be inserted.
- Remove the shaft key from the motor shaft.
- Predispose the magnet on the motor shaft paying attention, in case the magnet is of tma or tmas series, not to tighten the set screw close to the shaft key seat. In case the magnet is of tmas-c series please see the paragraph: "motors with shaft key seat and "tmas-c" series driving magnets".
- Position the unit vertically: a) on the test bench for tma series magnets in order to have the magnet and the motor adapter on the same level or b) on tool at155/1 for tmas series magnets in order to assemble the magnet in the correct position. Tighten the set screw with a max torque of 2.0 Nm.

Motors with shaft key seat and "TMAS-C" series driving magnets

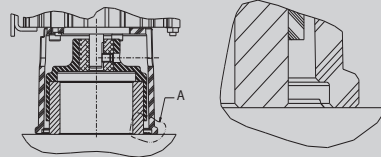
- Tighten the set screw in its seat in the magnet holder until it protrudes from the bore of the brass insert in order to verify that there are no imperfections in the thread which might stop the set screw before it is able to block the magnet on the rotor shaft.
- Untighten the set screw until it does not protrude any longer into the bore where the shaft will be inserted.
- Make sure the shaft key is in its seat on the motor shaft.
- Align the shaft key with the relevant seat in the magnet bore and slide the magnet on the motor shaft.
- Position the unit vertically on tool at155/1 with the magnet facing downwards in order to set the magnet in the correct position (see fig. 2).

WIRING THE MOTOR TO THE POWER SUPPLY

- The power supply must be consistent with the electrical data printed on the motor plate, with particular regard to voltage, frequency and current.
- The power supply should be switched off during installation.

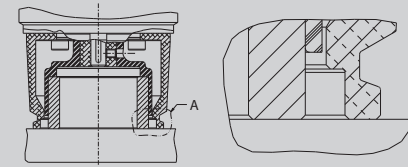
Fig. 2

TMA series driving magnets with "D" shaft

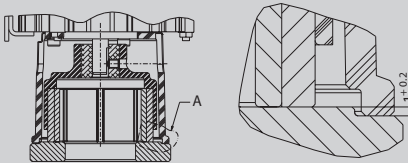


Place the unit vertically on the bench in order to have the magnet and the motor adapter on the same level.

TMA series driving magnets with shaft key seat



TMAS/TMAS-C series driving magnets with "D" shaft or shaft key seat



Place the unit vertically on tool AT155/1 in order to assemble the magnet in the correct position.

- The motor rotation must be clockwise (looking the motor in front). If operated counterclockwise, the pump won't work. In case the rotation is counterclockwise, proceed according to the scheme generally enclosed in the electrical wiring box.

The pumps – although identical in their aspect – may have GAS or NPT threaded ports. The thread of the fitting should match the thread of the pump port. If the pump has GAS threads the sealing is provided by an o-ring which is pressed against the flat surface of the port. With the NPT thread, the sealing is provided by the contact between the threads. In this case a few turns of PTFE tape around the fittings are necessary. Do not exceed in using PTFE tape as pieces of it may fall into the pump (especially on the Inlet side) and cause the pump to fail. The use of pipe dope (liquid sealant) should be avoided. A particular care is needed while mounting the fittings, to avoid liquid leaks. Hold the pump with a wrench in the area marked with the arrows indicating the inlet-outlet ports

and the rotation sense, without over-tightening. Maximum torque recommended to tighten the fittings is 15 Nm.

It is suggested to use aluminium sheet on each side of the pump to avoid damage to ports. Do not use the motor as pump support when tightening the fittings, in order to avoid a possible misalignment and stress of the shafts. If the pump is made of stainless steel the fittings have to be made of stainless steel or plastic, not in brass, to avoid problems of corrosion.

OPERATING CONDITIONS

Make sure that the pumped fluid is compatible with the materials of the pump. The Fluid-o-Tech pumps are designed to handle clean water at ambient temperature. Any other fluid and/or operating condition needs to be tested and approved by the customer and verified by Fluid-o-Tech. The maximum liquid temperature is 70 °C (158 F). It is strongly recommended to use, especially for the inlet port, piping with internal diameter 10 mm (3/8"). This will avoid cavitation and consequent failure of the pump. The piping on the outlet port has to be resistant to 20 bar. It is necessary to put, before the pump, a filter capable of keeping out particles larger than 10 µm which could cause fast wear of the internal components, and with a surface area big enough, in order not to cause hydraulic losses in the circuit. It is also important checking periodically the filter cartridge. In order to keep the filter under control, it is advisable to install a vacuum gauge before and after the filter. In case the vacuum increases more than 0.1 bar, the cartridge should be cleaned or changed. For a long life of the pump, the pumped fluid must not contain solid particles. Although the magnet drive rotary vane pumps are self-priming, they should operate under water head, in fact dry running causes fast wear of the internal components. A dirty filter or an insufficient supply of water could cause cavitation and fast wear of the internal components of the pump. If the line is subject to scarce pressure or flow it is necessary to fit a pressure/level switch before the pump in order to switch the motor off. It is also necessary to protect the system from incidental overpressures with safety devices such as a pressure relief valve or a pressure switch connected to the motor. It is not advisable to install solenoid valves in the circuit; however, if needed, they should be installed only after the pump. The internal diameter should be well sized to the pump capacity. In order to avoid pressure strokes it is necessary to operate the solenoid valve only after the pump stopped, allowing a few seconds to go by after the motor has been switched off. If the pump is equipped with a bypass valve, the valve will act, in case of accidental overpressure, to limit the pressure, thanks to an internal recirculation of the fluid.

The bypass valve is a relief valve and must not be used as a flow regulator. If used as a flow regulator, the water in excess will recirculate inside the pump heating and encouraging the deposit of limestone on the pump components. The maximum differential pressure should be at least 3 bar (43 psi) lower than the bypass valve setting in order to avoid operation with the bypass valve open. The maximum differential pressure must not exceed 16 bar (230 psi).

Thanks to the magnetic coupling the pump does not need a mechanical seal in order to prevent leakage.

This eliminates the problems connected to the use of a mechanical seal. However the maximum pressure depends on the pump model and it decreases with the increase of the flow rate. Being the transmittible torque limited by the magnet, the coupling between the motor and the pump is not guaranteed and therefore the pump might stop.

In order to re-establish the coupling it is sufficient to stop the motor, wait until complete stop and then restart the motor again. The sum of the inlet and outlet pressure must not exceed 20 bar (290 psi) in any case.

STANDARD MAINTENANCE

The Fluid-o-Tech magnet drive rotary vane pumps maintenance and replacement of parts subject to wear have to be done by a qualified technician. Periodic cleaning of the circuit and filters is advisable in order to avoid cavitation and wear of the internal components.

LISTINGS

The TMOT...A and TMSS...A are NSF listed. WRAS listed pumps are marked TW.

WARRANTY

Every new pump manufactured by Fluid-o-Tech is guaranteed to be free of defects in workmanship and material when leaving the factory for a period of 18 months from the production date stamped on the pump's housing, plus a period of 6 months to cover the warehouse and transit time, or for a period of maximum 24 months from the purchasing date to the product use.

In no event shall this period exceed 24 months from date of original invoice. Fluid-o-Tech will repair or replace at its judgement part or all of the product not conforming to this warranty. Fluid-o-Tech's responsibility under this warranty is limited to the repair or replacement of defective equipment returned to us on a D.D.P. basis, providing that our analysis discloses that such part or parts were defective at the time of sale.

Warranty is not recognized if:

- The directions on how to handle, install or operate the