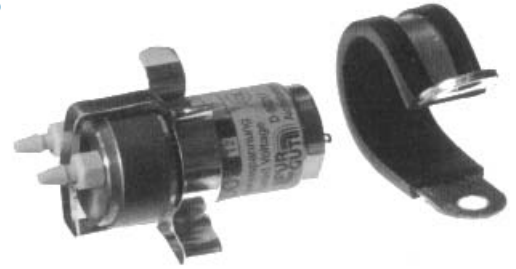


CLARK**Pressure/Vacuum Pump Models
118/126/135/137/138/147/155/157/167/168****DESCRIPTION**

These rotary vane pumps are an excellent pressure/vacuum source for gas analyzers, medical devices, process samplers and other analytical instrument applications. They are also useful for material handling and many general automation applications.

The pumps are quiet, reliable and mount in any position. The units operate oil free. The pump vanes have a service life of 1,000 hours and are easily field replaced without special tools.

**SPECIFICATIONS**

Maximum Differential pressure- 270 mbar

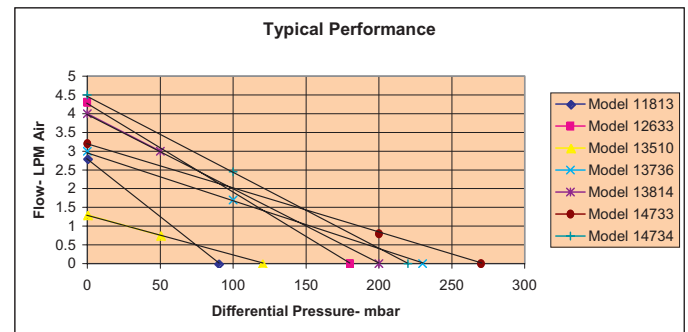
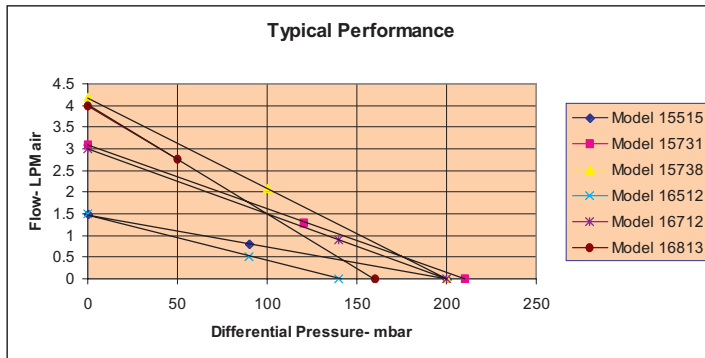
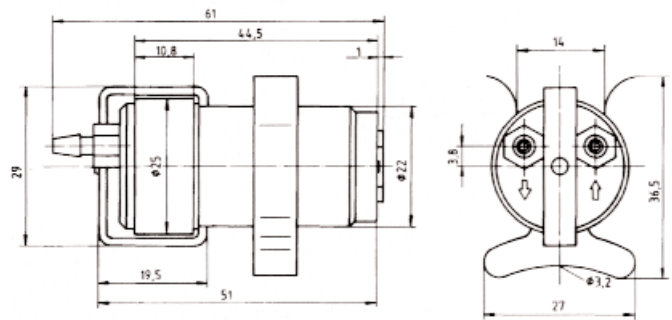
Maximum Flow-4.3 LPM

Vane Material- Carbon

Media- inert gases

NOTE

Operation at a somewhat lower than pump design voltage will yield a significantly longer life of the motor and the pump while also decreasing the current draw and operating noise of the unit.

DIMENSIONS (MM)**ORDERING INFORMATION**

Model	Voltage	Max. Flow(L/min)	Max. Pressure (mbar)	Min Current (mA)	Max. Current (mA)	Weight (grams)
13814	6	4.0	200	270	480	102
15738	12	4.2	200	150	280	102
16813	24	4.0	160	80	120	102
11813	3	2.8	90	230	370	102
12633	4.5	4.3	180	420	730	102
13510	6	1.3	120	140	220	102
13736	6	3.0	230	210	440	102
14733	9	3.2	270	190	390	102
14734	9	4.5	220	270	470	102
15515	12	1.5	200	90	160	102
15731	12	3.1	210	120	230	102
16512	24	1.5	140	40	65	102
16712	24	3.0	200	60	110	102

Bold items are typically in stock