

**FURGUT****Pressure/Vacuum Pump Model Series 50L***DC Powered Rotary Vane Pumps, Gas Flow to 6.7 LPM***DESCRIPTION**

These rotary vane pumps are an excellent pressure/vacuum source for gas analyzers, medical devices, process samplers and other analytical instrument applications. They are also useful for material handling and many general automation applications.

The pumps are quiet, reliable and mount in any position. The units operate oil free. The pump vanes have a service life of 1,000 hours and are easily field replaced without special tools.

**SPECIFICATIONS**

Maximum Differential Pressure- 1700 mbar

Maximum Flow- 6.7 LPM

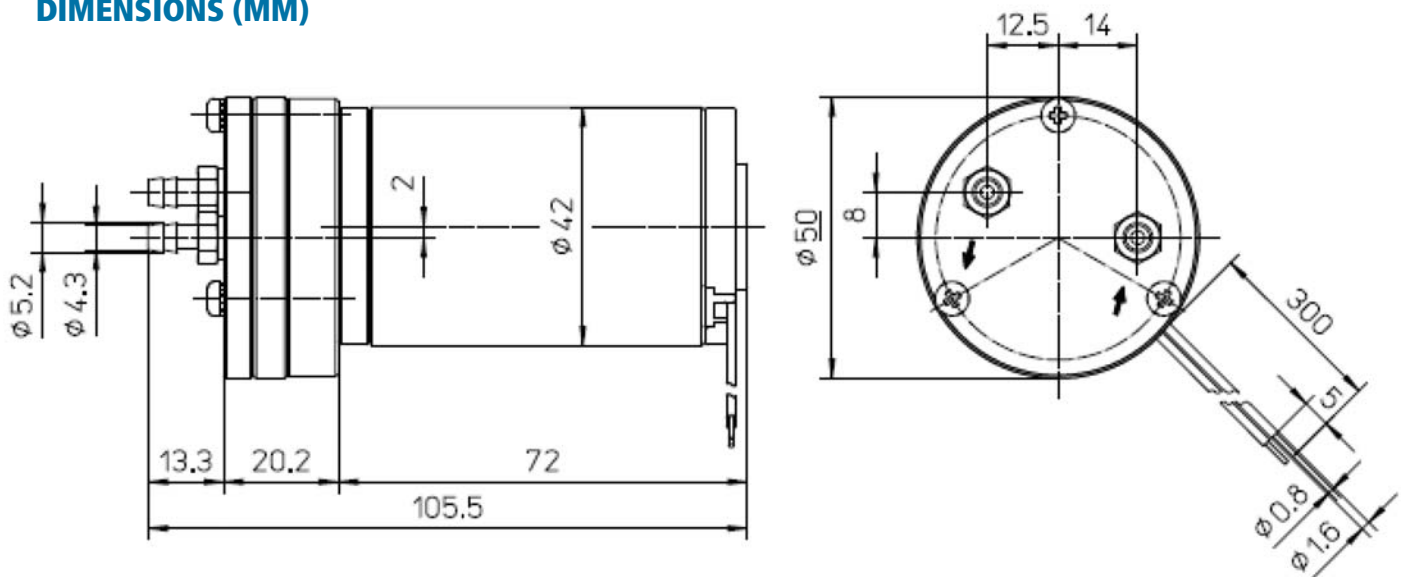
Vane Material- Carbon

Media- Inert non-explosive gases

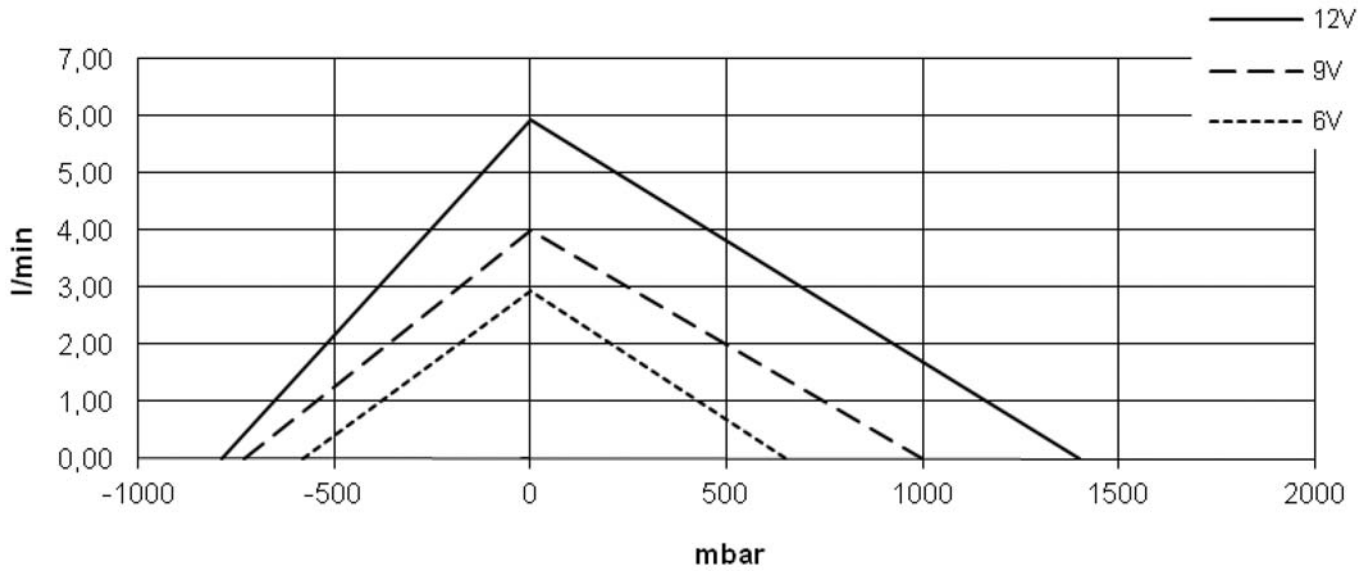
**NOTE**

Operation at a somewhat lower than pump design voltage will yield a significantly longer life of the motor and the pump while also decreasing the current draw and operating noise of the unit.

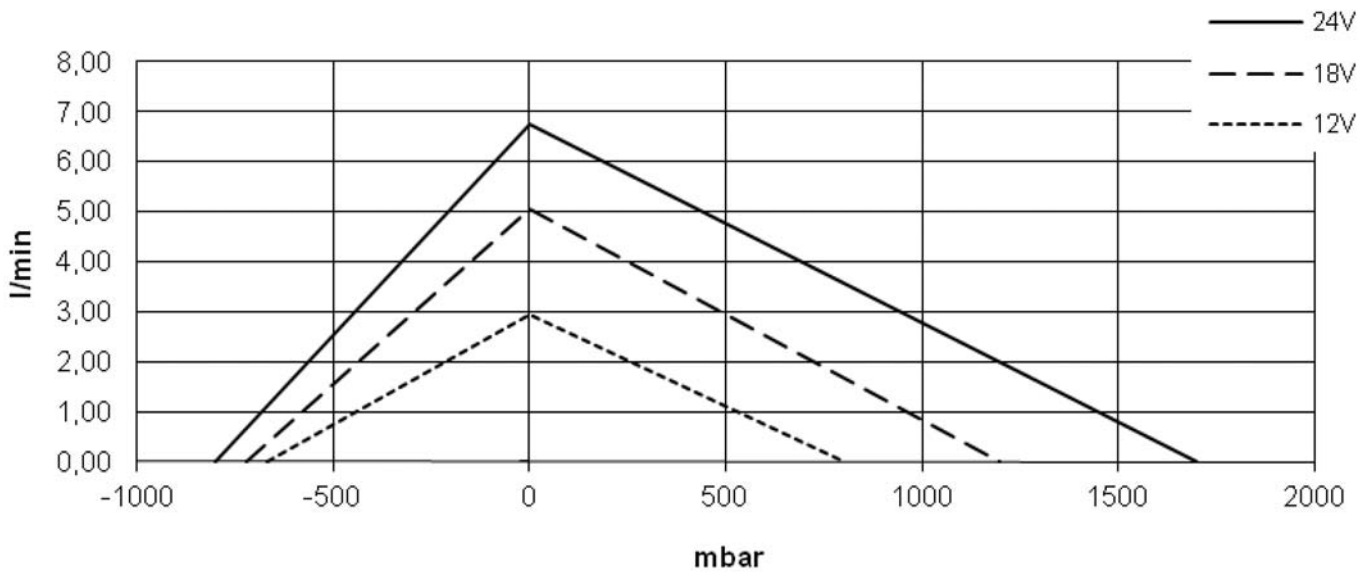
If used for continuous operation, we recommend selection of a pump that has a slightly higher pumping capacity than needed during normal operation.

**DIMENSIONS (MM)**

### Type/Model: DC12/50L



### Type/Model: DC24/50L



### ORDERING INFORMATION

Model/ Order Code	Nominal Current (A)	Voltage (V)	Max. Flow (L/min)	Vacuum				Pressure				Weight (kg)
				Current		Vacuum (mbar)	Noise Level (dBA)	Current		Pressure (mbar)	Noise Level (dBA)	
				Min (A)	Max (A)			Min (A)	Max (A)			
DC12/50L No. 15951	1.9	12.0	5.9	1.0	1.7	790	82	1.0	3.8	1400	71	0.65
		9.0	4.0	0.8	1.6	730	79	0.8	2.9	1000	65	
		6.0	2.9	0.7	1.6	580	70	0.7	1.9	650	57	
DC24/50L No. 16952	0.9	24.0	6.7	0.5	0.9	800	84	0.6	1.9	1700	73	
		18.0	5.0	0.4	0.8	720	81	0.5	1.4	1200	67	
		12.0	2.9	0.4	0.7	670	73	0.4	0.9	800	62	