

**FURGUT****Pressure/Vacuum Pump Model Series 80L***DC Powered Rotary Vane Pumps, Gas Flow to 8.6 LPM***DESCRIPTION**

These rotary vane pumps are an excellent pressure/vacuum source for gas analyzers, medical devices, process samplers and other analytical instrument applications. They are also useful for material handling and many general automation applications.

The pumps are quiet, reliable and mount in any position. The units operate oil free. The pump vanes have a service life of 1,000 hours and are easily field replaced without special tools.

**SPECIFICATIONS**

Maximum Differential Pressure- 1300 mbar

Maximum Flow- 8.6 LPM

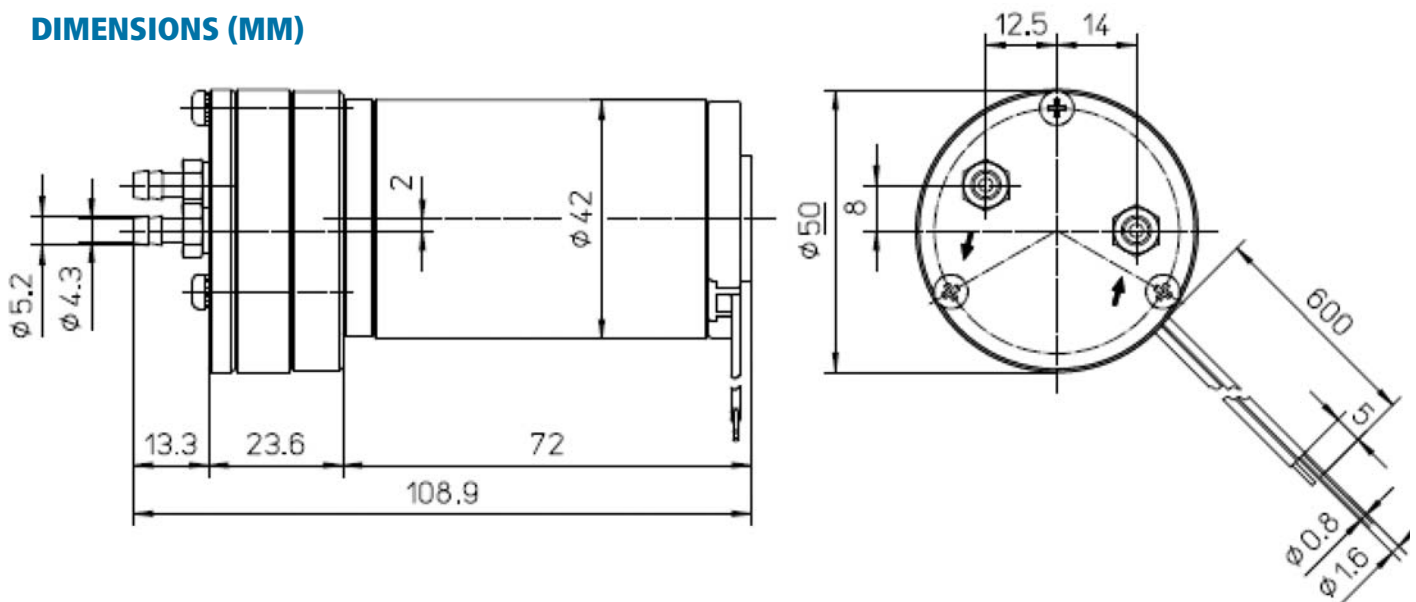
Vane Material- Carbon

Media- Inert non-explosive gases

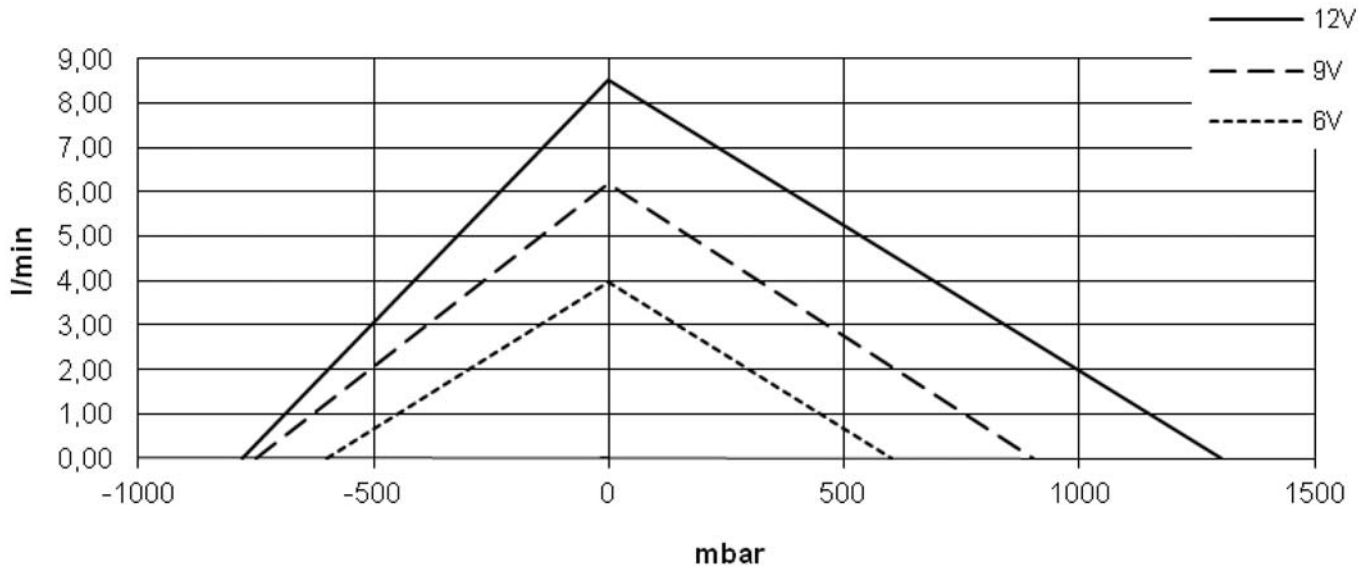
**NOTE**

Operation at a somewhat lower than pump design voltage will yield a significantly longer life of the motor and the pump while also decreasing the current draw and operating noise of the unit.

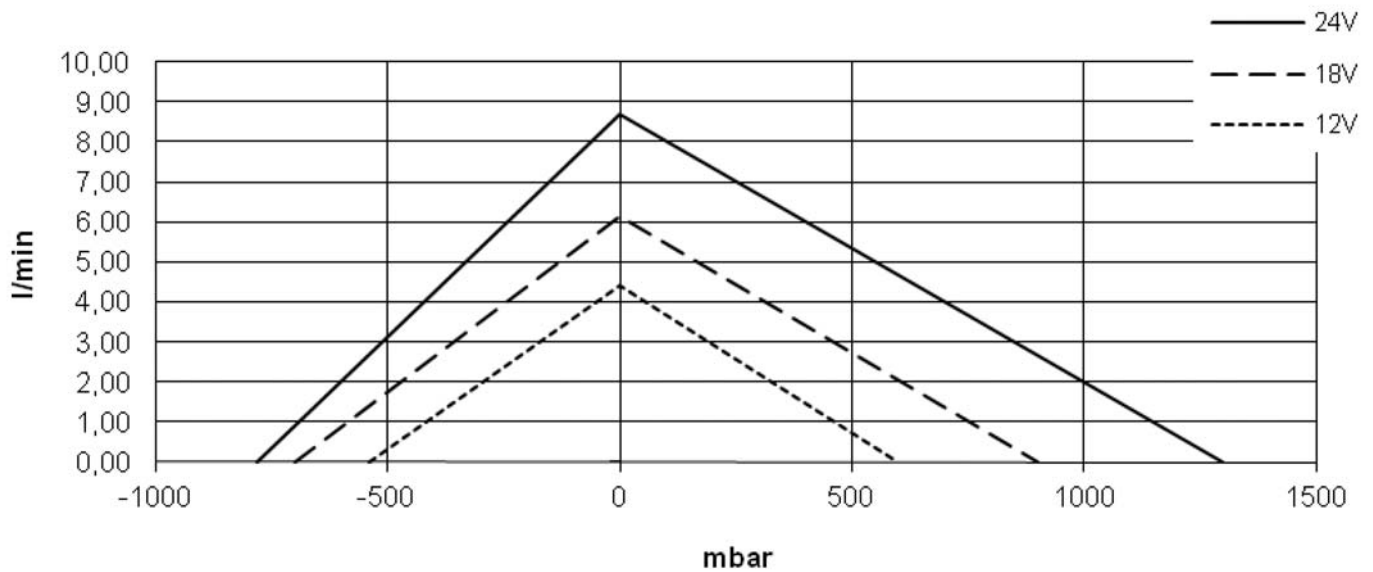
If used for continuous operation, we recommend selection of a pump that has a slightly higher pumping capacity than needed during normal operation.

**DIMENSIONS (MM)**

### Type/Model: DC12/80L



### Type/Model: DC24/80L



### ORDERING INFORMATION

Model/ Order Code	Nominal Current (A)	Voltage (V)	Max. Flow (L/min)	Vacuum				Pressure				Weight (kg)
				Current		Vacuum (mbar)	Noise Level (dBA)	Current		Pressure (mbar)	Noise Level (dBA)	
				Min (A)	Max (A)			Min (A)	Max (A)			
DC12/80L No. 15982	1.9	12.0	8.5	1.4	2.0	780	78	1.3	4.3	1300	81	0.69
		9.0	6.1	1.1	1.9	750	74	1.1	3.3	900	73	
		6.0	3.9	0.8	1.6	600	66	0.8	2.1	600	64	
DC24/80L No. 16984	0.9	24.0	8.5	0.6	1.0	700	81	0.6	2.1	1300	72	
		18.0	6.1	0.5	1.0	700	77	0.5	1.8	900	67	
		12.0	4.4	0.4	0.8	540	70	0.4	1.1	600	58	