

FURGUT**Pressure/Vacuum Pump Model Series 90SL***DC Powered Rotary Vane Pumps, Gas Flow to 13 LPM***DESCRIPTION**

These rotary vane pumps are an excellent pressure/vacuum source for gas analyzers, medical devices, process samplers and other analytical instrument applications. They are also useful for material handling and many general automation applications.

The pumps are quiet, reliable and mount in any position. The units operate oil free. The pump vanes have a service life of 1,000 hours and are easily field replaced without special tools.

SPECIFICATIONS

Maximum Differential Pressure- 1700 mbar

Maximum Flow- 13 LPM

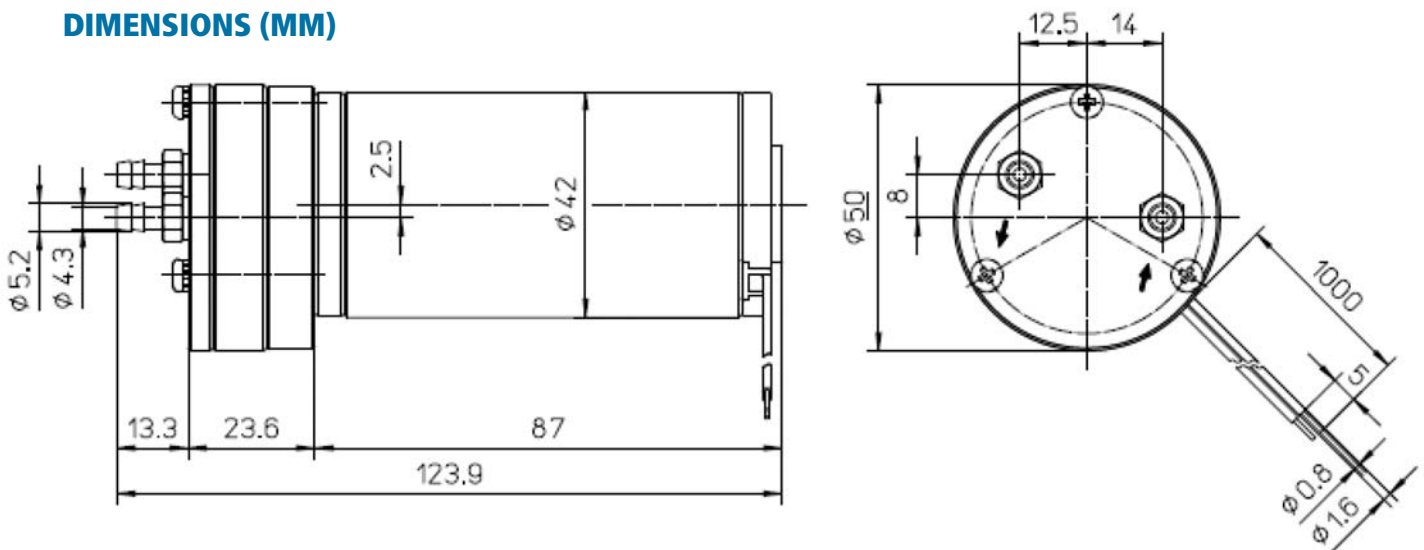
Vane Material- Carbon

Media- Inert non-explosive gases

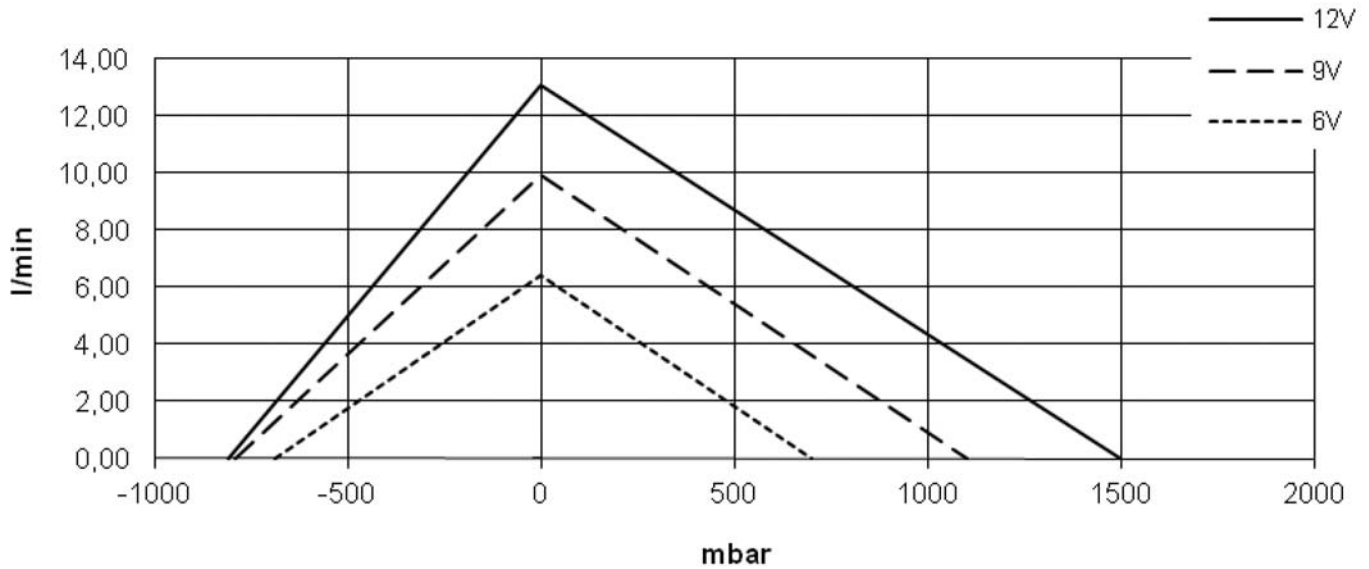
NOTE

Operation at a somewhat lower than pump design voltage will yield a significantly longer life of the motor and the pump while also decreasing the current draw and operating noise of the unit.

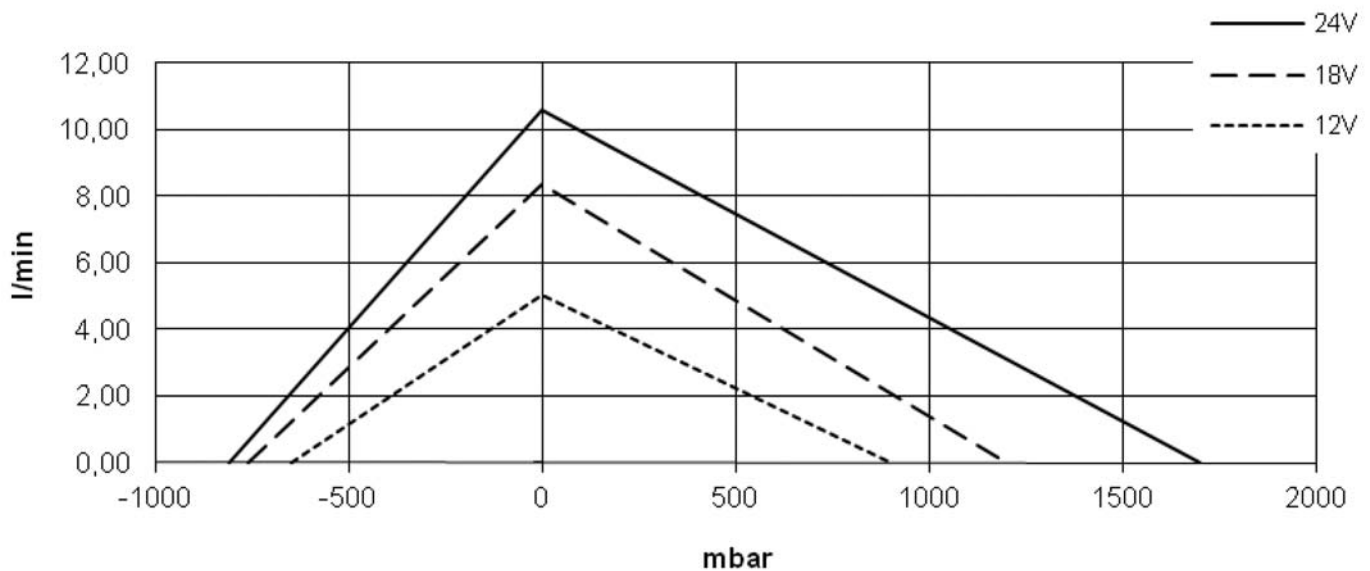
If used for continuous operation, we recommend selection of a pump that has a slightly higher pumping capacity than needed during normal operation.

**DIMENSIONS (MM)**

Type/Model: DC12/90SL



Type/Model: DC24/90SL



ORDERING INFORMATION

Model/ Order Code	Nominal Current (A)	Voltage (V)	Max. Flow (L/min)	Vacuum				Pressure				Weight (kg)
				Current		Vacuum (mbar)	Noise Level (dBA)	Current		Pressure (mbar)	Noise Level (dBA)	
				Min (A)	Max (A)			Min (A)	Max (A)			
DC12/90SL No. 15988	2.7	12.0	13.0	1.6	3.0	810	84	2.2	7.6	1500	71	0.79
		9.0	9.9	1.3	3.1	790	81	1.8	5.4	1100	74	
		6.0	6.3	1.1	2.8	690	73	1.1	3.4	700	69	
DC24/80L No. 16987	1.2	24.0	10.5	0.7	1.2	810	82	0.7	3.2	1700	71	
		18.0	8.3	0.6	1.0	760	79	0.6	2.4	1200	65	
		12.0	5.0	0.4	0.9	650	73	0.5	1.6	900	59	