

# CLARK

## DGM09 DC Magnet Drive Pump/Motor Unit

12 or 24 V DC, Flow to 140 LPH

### DESCRIPTION

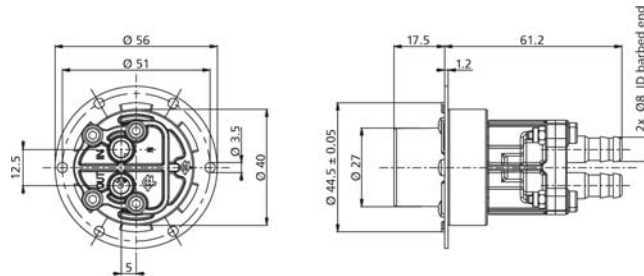
The DGM09 Series magnet drive gear pumps derive from the well established mag drive MG200 Series. Built to handle clean water and relatively viscous fluids at low pressure, the DGM09 Series pump-motor unit has low pulsation and is capable of handling fluids at a maximum temperature of 95°C (203°F).

The pump housing and the gears are made of Vectra. Seals are available in NBR, EPDM or VITON®. The extreme compactness of its design makes it the preferred choice where space is limited. Suction/discharge ports are 8 mm barbed end.

Motor: 12 or 24 V DC brush type  
 Speed: 3000 rpm  
 Weight: 0.55 Kg ( 1.21 Lbs)



### DIMENSIONS (MM)

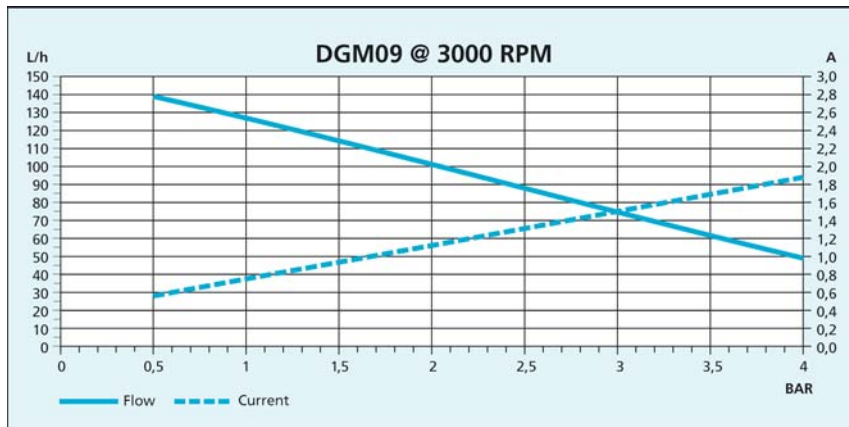


### TYPICAL APPLICATIONS

- Water purification
- Laser cooling
- Water circulation
- Condensation removal
- Low pressure carbonation



### PERFORMANCE (PRESSURE, FLOW, CURRENT CONSUMPTION)



### ORDERING INFORMATION

EXAMPLE MODEL NUMBER: DGM 09 E M01

A Model	B Gear Width	C Seal Material	D Motor Type
DGM	09 (9 mm)	E = EPDM N = NBR V = VITON	M01 = 3000 rpm, 24 VDC M03 = 3000 rpm, 12 VDC