

# CLARK

## KPM Round Series Miniature Gas Pumps

DC Power, Pressure to 300 mmHg (5.8 PSI)

### DESCRIPTION

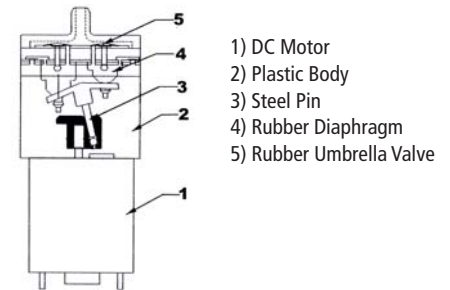
The KPMR series pumps incorporate two mini-diaphragms operated by a rocker arm attached to an eccentric on a motor shaft. The function is simple and reliable.

KPMR pumps are remarkably small, with overall length less than 65 mm. In addition to small size and light weight they offer excellent performance considering their very low cost.

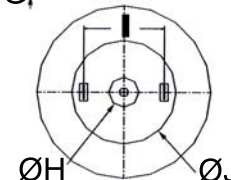
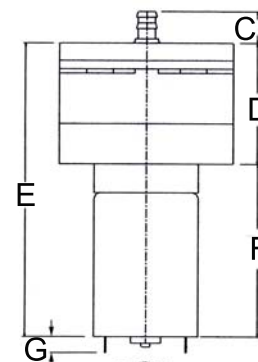
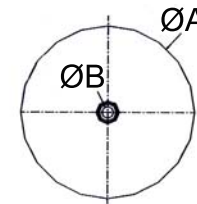
KPMR pumps are offered in two models and are only offered for OEM applications. Samples are available for the qualified OEM so that application suitability can be determined.



SPECIFICATIONS		
GENERAL	KPM-27C-6B3	KPM-32A-12A
Rated Voltage	6 VDC	12 VDC
Operating Voltage	4.0-7.0 V	4.0-13 V
Rated Current	<430 mA	<390 mA
Typ. Max Pressure	300 mmHg	300 mmHg
Typ. Max Flow (No Back Pressure)	>1.8 LPM	>3.5 LPM
Typ. Max Flow (@150 mmHg)	>1.2 LPM	>2.0 LPM
Typ. Startup Voltage (200 mmHg)	4V	6V
Operating Temp. Range	5-45°C	5-45°C
Operating Humidity Range	30 TO 80% RH	30 TO 80% RH
Duty Cycle	Intermittent	Intermittent
Typ Noise	<63 dB (30 cm away)	<60 dB (30 cm away)
Typ. Life	250 HRS	250 HRS
Tube Barb O.D.	4 MM O.D.	4 MM O.D.



- 1) DC Motor
- 2) Plastic Body
- 3) Steel Pin
- 4) Rubber Diaphragm
- 5) Rubber Umbrella Valve



DIMENSIONS (MM)										
MODEL	A	B	C	D	E	F	G	H	I	J
KPM-27C-6B3	27.0	4.2	6.3	27.0	58.0	31.0	3.5	6.5	18.3	24.2
KPM-32A-12A	32.0	4.2	9.0	31.2	50.2	19.0	3.3	-	20.3	32.0

Note: Above dimensions are for general sizing and reference purposes only. Please request specific model drawing for precise dimensions with tolerances.

### ORDERING INFORMATION

#### SELECT MODEL NUMBER

Model

KPM-27C-6B3  
KPM-32A-12A

These items typically ship from stock