

CLARK

MK200/300 Magnetic Driven Gear Pump With DC Motor

Flow to 240 LPH (63.4 GPH), Pressure to 20 Bar (290 PSI)

DESCRIPTION

The MK 200/300 series pumps are designed to complete the existing MG 200 series with improved performance in terms of flow rate, pressure, capability to handle high viscosity fluids and a wider offer of materials to suit most applications, from the food to the industrial and chemical markets.

The housing of the pump and the internal metal parts are AISI 316L. In/Out ports have 1/4" NPT female threads. The gears are available in PTFE or PEEK™. The driving magnet is rare earth type, capable of driving the pump at high pressure.

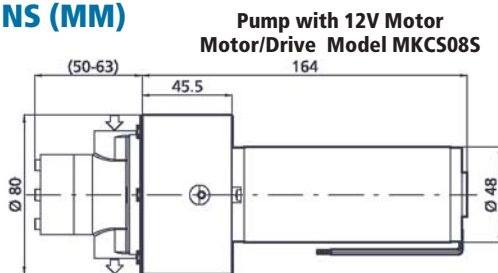
The quality of the materials of the assembled components allows handling of fluids with temperatures up to 120°C (248°F).

The motor with adaptor and drive magnet is heavy duty, providing a reliable and noiseless operation in a compact size package. The pole-to-pole alignment of the two magnets provides the driving motion to the pump. Decoupling will occur when the pump load exceeds the maximum coupling torque provided by the alignment of the two magnets.

SPECIFICATIONS

Pump Housing Material: 316 SS
 Gears & Bushing Material: PEEK/PTFE
 Connections: 1/4" NPT
 Flow Range: Three pump sizes- MK 309, MK 313, MK 317 (9 mm, 13 mm or 17 mm gears), see flow charts

DIMENSIONS (MM)

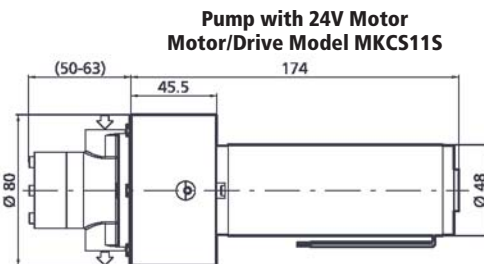


TYPICAL APPLICATIONS

- Medical and surgical equipment
- Hemodialysis apparatus
- Exhaust fumes treatment
- Cooling systems
- Ink-jet printing systems
- Water purification and ultra-filtration
- Lubrication
- Seal flush
- Sampling
- Lab instrumentation
- Laser apparatus

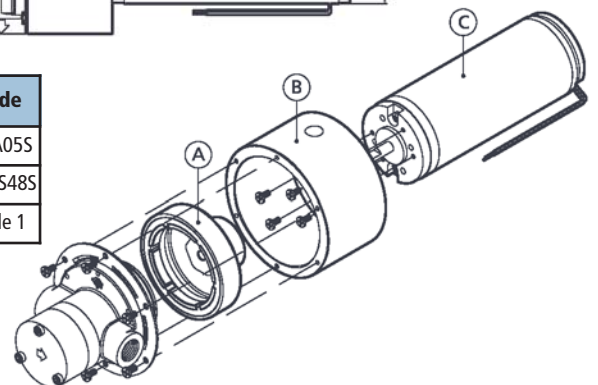


Temperature ranges :
 PTFE : -45°C (-49 F) / + 50°C (+122° F)
 PEEK : -45°C (-49 F) / + 120°C (+248° F)
 Max system pressure : 20 bar (290 psi)
 Pump/Motor weight: 2 Kg (4.4 lbs)
 NSF listed pumps are available for potable water.

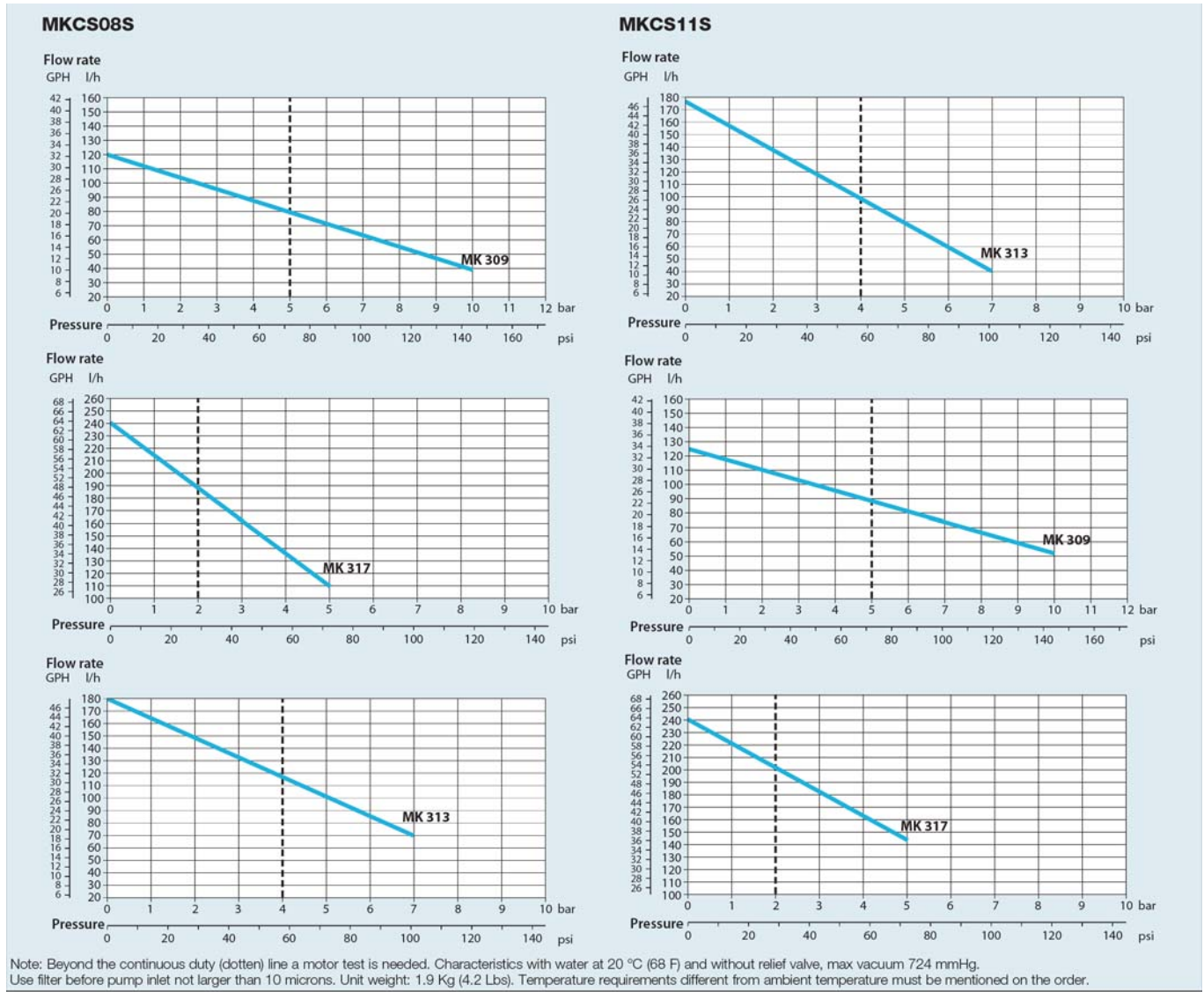


Model includes Drive Magnet (A), Motor Adapter (B) & Motor (C)	Model MKCS08S	Model MKCS11S
Voltage (V)	12 DC	24DC
Rated Speed (rpm)	3,050	3,150
Current Consumption (A)	3.4	2.6
Output Power (W/HP)	32/.0429	49.5/.0664
Weight (g/lb)	910/2.1	980/2.16

Description	Code
A Drive Magnet for 5 mm Drive	MKA05S
B Motor adapter	MKB548S
C 12 or 24 VDC Motor	Table 1



FLOW CURVES



ORDERING INFORMATION

1) Order Drive, Adaptor & Motor Assembly from Table 1

EXAMPLE: MKCS11S

2) Order Pump From Table 2 Below

EXAMPLE: MK309X170PV

Table 2- Pump Part Number ABCDEFG						
A	B	C	F	E	D	G
*Pump Series	Gear Width	Housing Material	Connections	Relief Valve	Gear Material	*Static Seal Material
MK2= PTFE Flat Seals MK3= O-ring Seal	09= 9mm 13= 13mm 17= 17mm	X= AISI 316	17= 1/4" NPT	0= without 1= with MK3 is not available with relief valve	T= PTFE P= PEEK™	- =MK2 ordered S= Silicon N= NBR T= PTFE V= Viton

*Each pump has three seals, two for the pump body and one for the magnet cup. Model type MK2 has all PTFE flat seals. Model MK3 is offered with a choice of o-ring seal material. Note that the material chosen in the order matrix is used for all three seal locations. If a relief valve is ordered the seal for the relief valve is always PTFE.