

# CLARK

## MTC Series Magnet Drive External Gear Pumps

Flow to 10.5 GPM, Static Pressure to 500 PSI

### DESCRIPTION

The MTC magnetically coupled gear pump offers a flow range of up to 10.5 GPM with precision performance.

The MTC series works well in metering applications where environmental concerns or system pressure dictate the need for a leak-free, seal-less pump.

These pumps are designed to operate at either 2-pole or 4-pole speeds and provide pulse free delivery with a wide range of fluids.

MTC Pumps are available in AISI 316L stainless steel or 6061 T651 anodized aluminum base material with PPS gears and bushings.

### SPECIFICATIONS

Pump Housing: AISI 316L Stainless Steel or 6061 T651 anodized aluminum

Gears & Bushing Material: PPS

Ports: 3/8", 1/2" or 3/4" NPT; generally 3/8" NPT to 4.5 gpm, 1/2" NPT above 5 gpm, 3/4" NPT for high viscosity fluids. Consult us.

Max Temperature : 60° C (140° F); For higher temperatures to 120°C (248° F) gears are sized for heat expansion, consult us.



### TYPICAL APPLICATIONS

- X-ray equipment heat transfer fluids
- Semi-conductor process cooling
- Chemical transfer
- Metering
- Water purification
- Process temperature control
- Pumping of most clean or filtered fluids

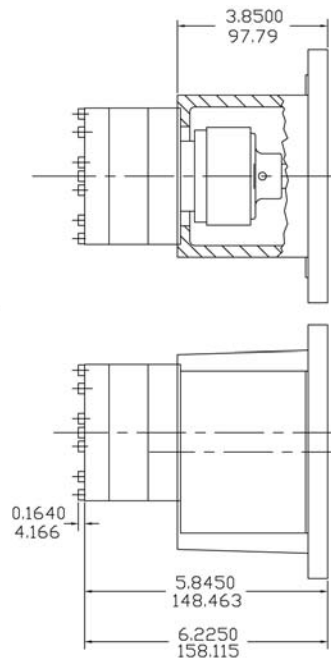
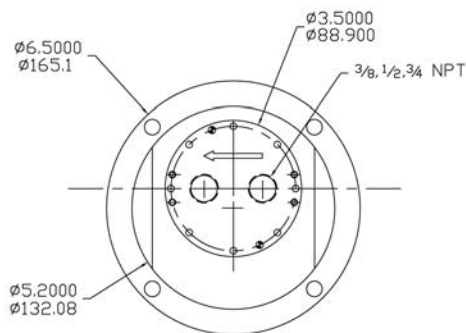
Max. Speed: 4,000 rpm  
 Max Static Pressure: 500 psi (35 bar)  
 Viscosity Range: 0.3 to 1000 Cps  
 Max Vacuum: 28 in. Hg (724 mm Hg)  
 Motor Interface: 56C Frame Flange

MTC Models (3450 RPM)		
Model	*Connection	Description
MTC10PPSS	1/2" NPT	10.6 GPM, PPS gears/bushings, 316L SS housing
MTC8PPSS	1/2" NPT	8.3 GPM, PPS gears/bushings, 316L SS housing
MTC6.5PPSS	1/2" NPT	6.9 GPM, PPS gears/bushings, 316L SS housing
MTC5.5PPSS	1/2" NPT	5.5 GPM, PPS gears/bushings, 316L SS housing
MTC4.5PPSS	3/8" NPT	4.6 GPM, PPS gears/bushings, 316L SS housing
MTC3.5PPSS	3/8" NPT	3.7 GPM, PPS gears/bushings, 316L SS housing
MTC2.5PPSS	3/8" NPT	2.8 GPM, PPS gears/bushings, 316L SS housing

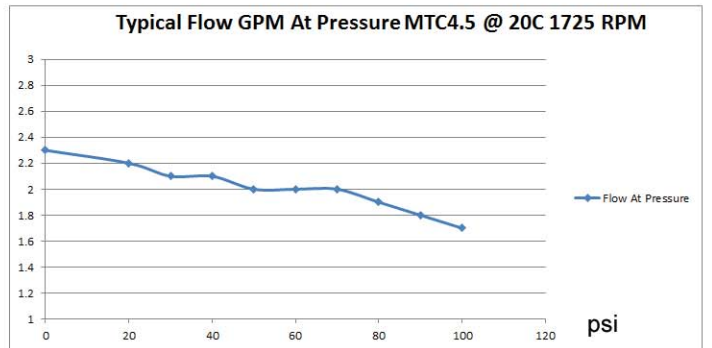
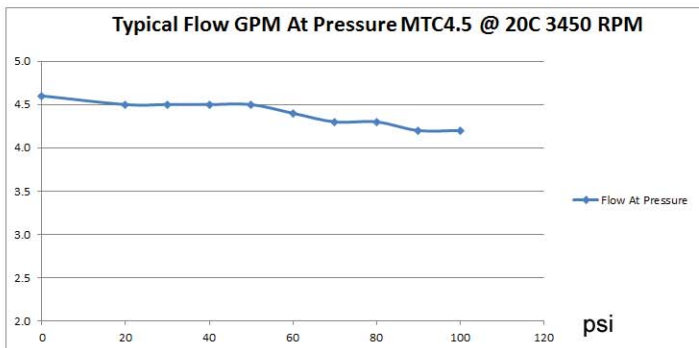
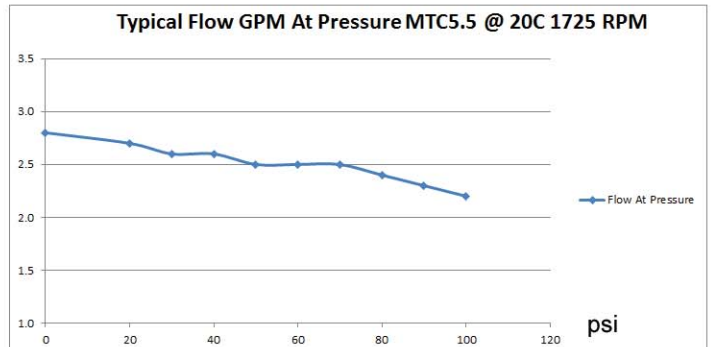
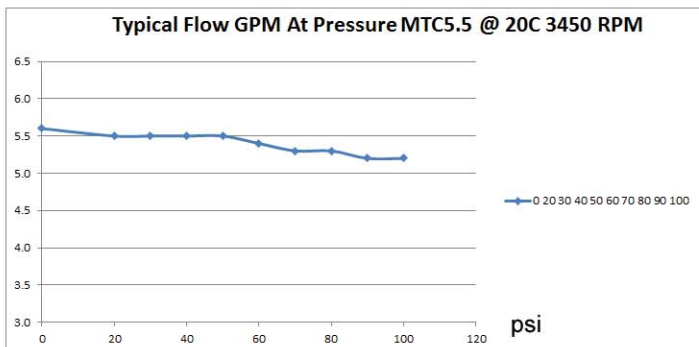
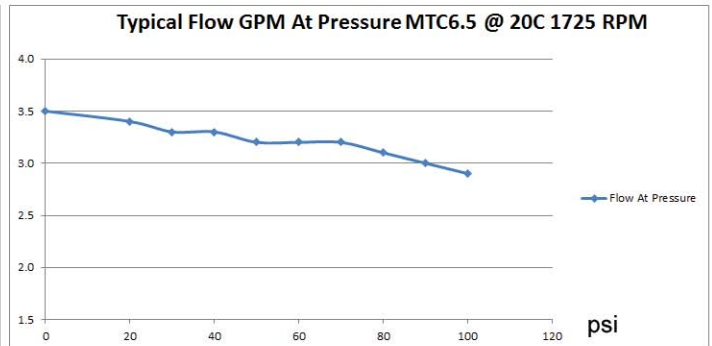
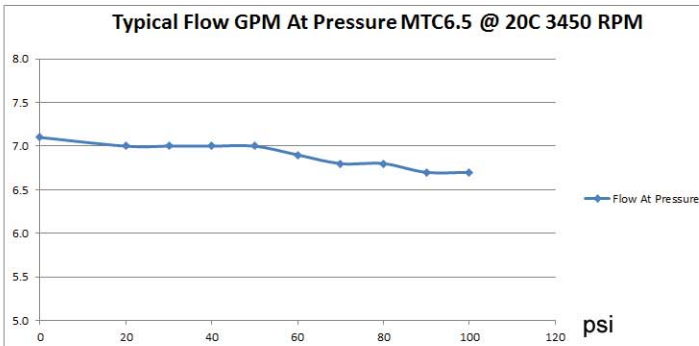
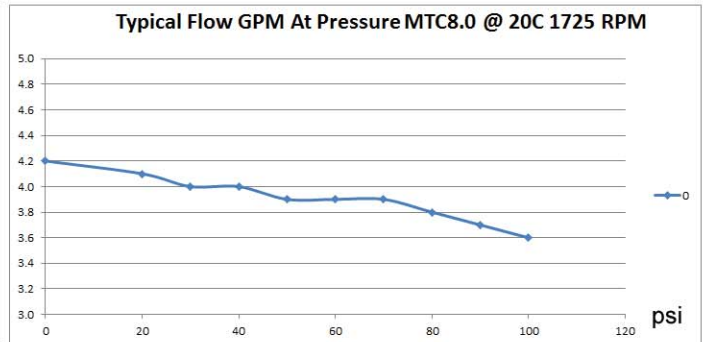
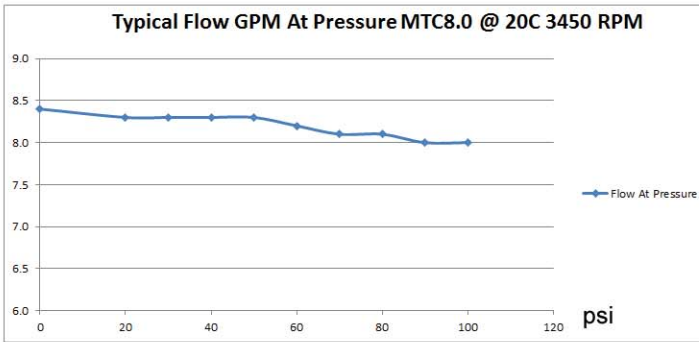
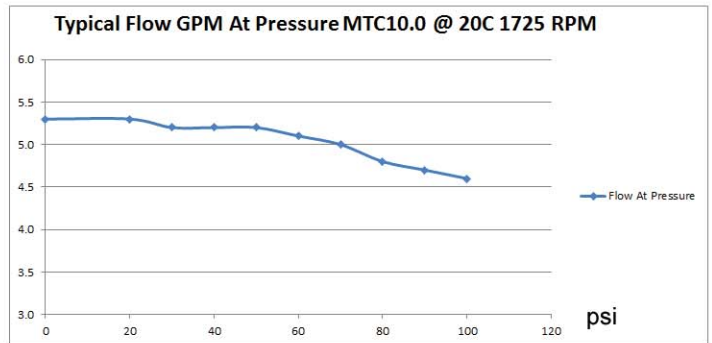
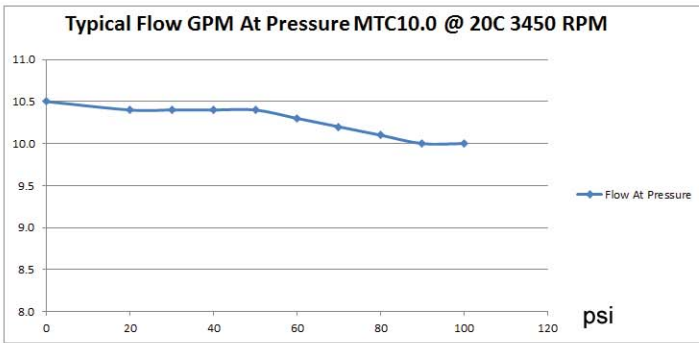
\*Port sizes can be increased model to model for high viscosity fluids

### DIMENSIONS (INCHES,MM)

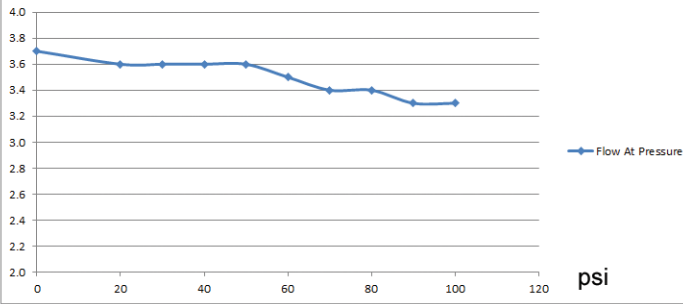
#### PUMP/MAGNETIC COUPLING/56C FRAME FLANGE



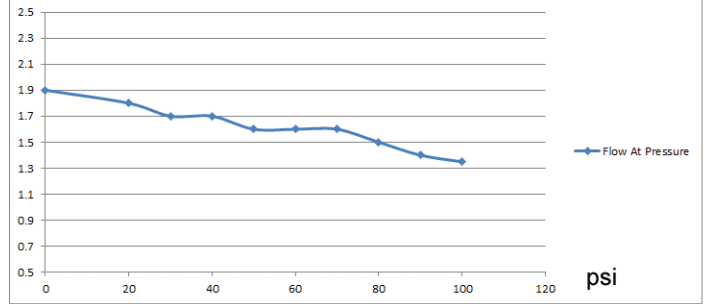
**PUMP MODEL SELECTION/FLOW CURVES**



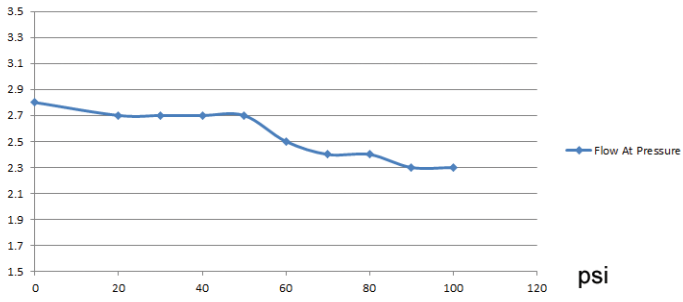
Typical Flow GPM At Pressure MTC3.5 @ 20C 3450 RPM



Typical Flow GPM At Pressure MTC3.5 @ 20C 1725 RPM



Typical Flow GPM At Pressure MTC2.5 @ 20C 3450 RPM



Typical Flow GPM At Pressure MTC2.5 @ 20C 1725 RPM

