

# MARCO

## Series UP1 Impeller Pumps for Wastewater & Additives

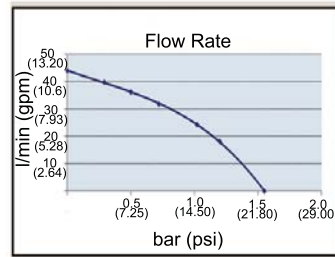
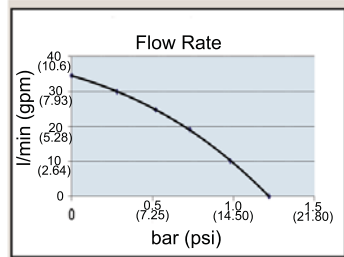
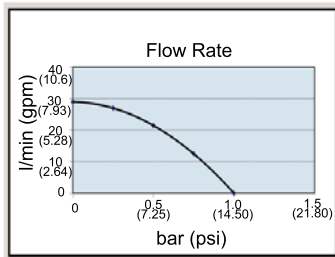
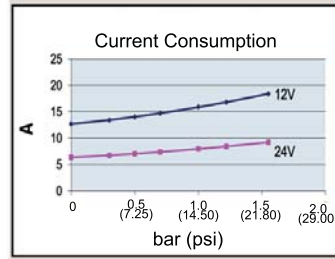
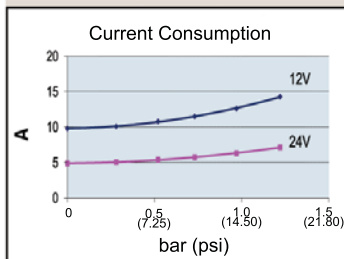
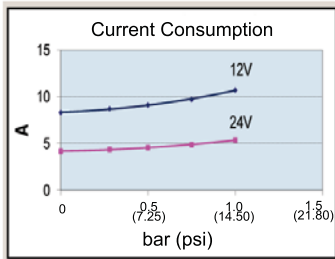
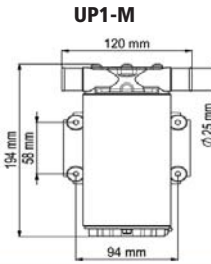
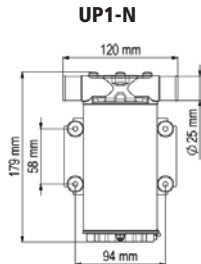
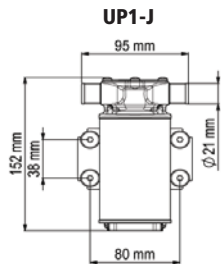
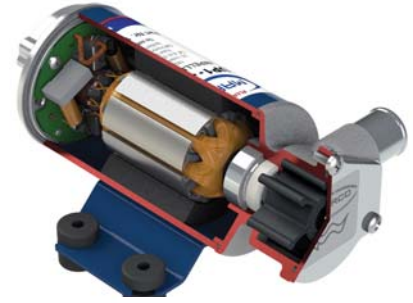
Water to 11.9 GPM

### DESCRIPTION

Model UP1 impeller pumps are self-priming, compact, powerful, 12 or 24 VDC electric pumps with flexible nitrile impeller.

UP1 series pumps are available in 3 different flow rates: 7.4, 9.25 and 11.9 gpm.

Fitted with water proof cable guide and internal brush holder with EMI filter. ISO 8846 and ISO 8849. Ideal for engine additive pumping, wastewater transfer, bilge, and ballast tank pumping.



Model	Voltage	Manual Switch	Self-Prime meters (ft)	Max Press. bar (psi)	Max. Flow Rate	Fuse Amps	Ports
UP1-N-12V	12 VDC	-	1.5 (5)	1.2 (17.4)	35 (9.25)	8	3/8" BSP
UP1-N-24V	24 VDC	-	1.5 (5)	1.2 (17.4)	35 (9.25)	4	3/4" NPT Male
UP1-J-12V (N,S,RS)	12 VDC	N=None S= On/Off RS=On/Off/ Reversing	1.5 (5)	1 (14.5)	28 (7.4)	*10	1" BSP 1" NPT Male Adaptors Supplied
UP1-J-24V (N,S,RS)	24 VDC		1.5 (5)	1 (14.5)	28 (7.4)	*5	
UP1-M-12V)	12 VDC	-	1.5 (5)	1.5 (21.8)	45 (11.9)	14	
UP1-M-24V)	24 VDC	-	1.5 (5)	1.5 (21.8)	45 (11.9)	7	

\*Fuse is built-in on models supplied with manual switch



**Built-in Manual Switch Option**  
On/Off  
On/Off/Reversing