

# HUBA 605 Series Differential Pressure Switch

Switch Points From 0.05" w.c. to 1.6" w.c.

## DESCRIPTION

The 605 differential pressure switch is designed for OEM differential pressure alarm or interlock applications.

Typical applications are in appliances and HVAC systems for fan, room pressure, draft, and level monitoring.

They are for use with air and non-corrosive gases.

Minimum order quantities apply to this product.

## SPECIFICATIONS

Pressure Switch Point: Factory Set, 0.05-1.6" w.c. (12.45-400Pa)

Dead Band: Factory set, see tables D & E

Max. Overpressure: 20" w.c. (5000 Pa)

Media & Ambient Temperature: -22 to 176°F (-30 to 80°C)

Storage Temperature: -22 to 185°F (-30 to +85 °C)

Lowest Actuation Pressure: 0.05" w.c. (12.45 Pa)

Switch Point Tolerance: See table A

Switch Point Repeatability: ±.004" w.c. (1.0 Pa)

Case construction:

Main case: fiberglass-reinforced plastic

Cover: plastic

Weight: 60 grams without bracket

Installation Orientation: Vertical or horizontal (with electrical connections facing downward). Must be specified.

Pressure Connections: Tubing Connector for 3/16 ID Tubes

Diaphragm: Silicone LSR

Electrical Connections: AMP connectors, 6.3 or 4.8 mm per DIN 46244

Switch Type: SPDT

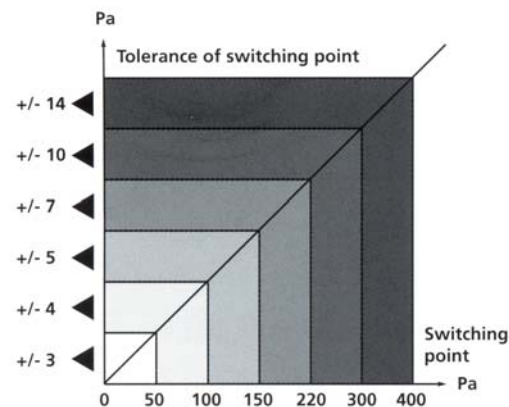
Contact Rating: See Tables D & E

Approval: UL, MFHX2.MH49692

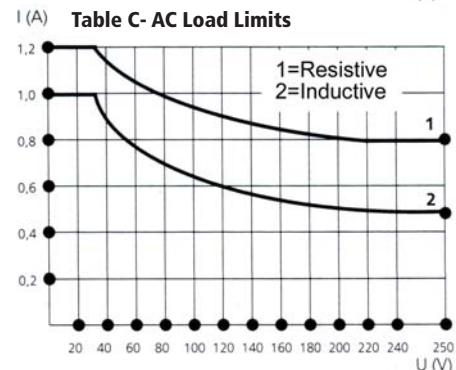
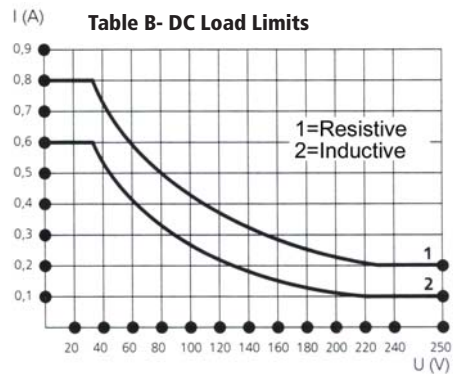


Protection Class: IP 00 without cover, IP 30 with contact safety guard, IP 54 with cover, with PG9/11, IP 65 with cover, with PG9/11 and seal.

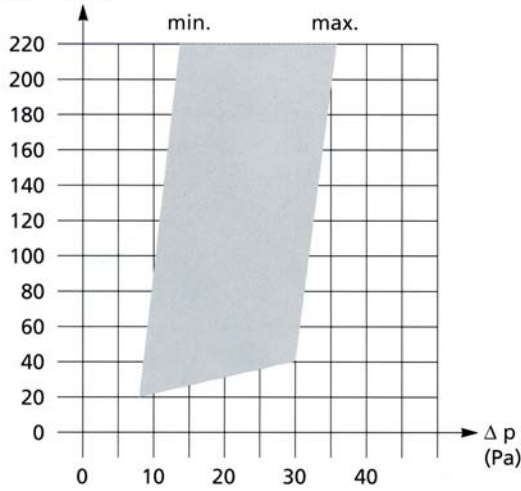
Service Life: > 10<sup>6</sup> switching cycles



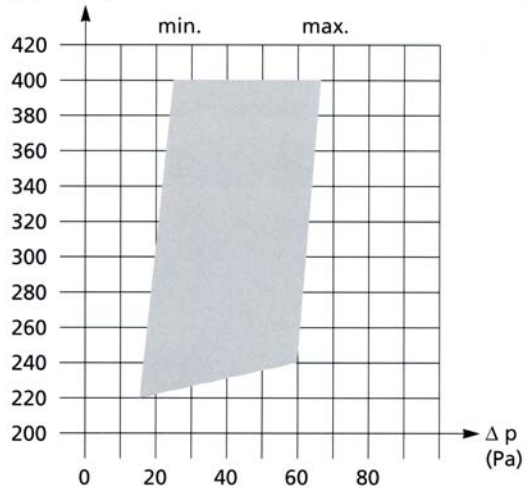
- **AUTOMATED CALIBRATION PROCESS FOR HIGH ACCURACY**
- **INTEGRATED CABLE STRAIN RELIEF**
- **TRAPEZOIDAL BEAD DIAPHRAGM DESIGN INSURES LONG TERM SET POINT STABILITY**
- **SELF-CLEANING CONTACT DESIGN HAS LONG LIFE**



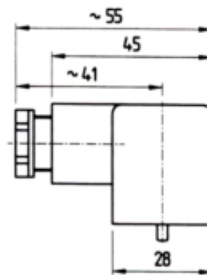
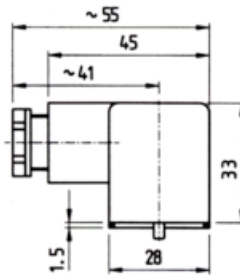
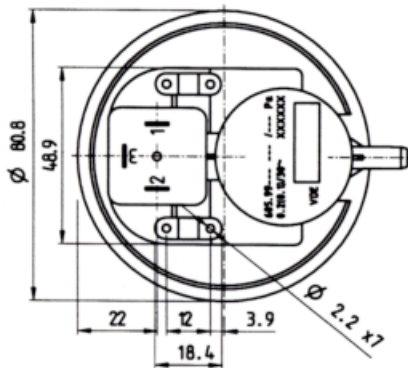
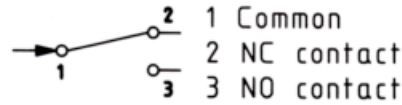
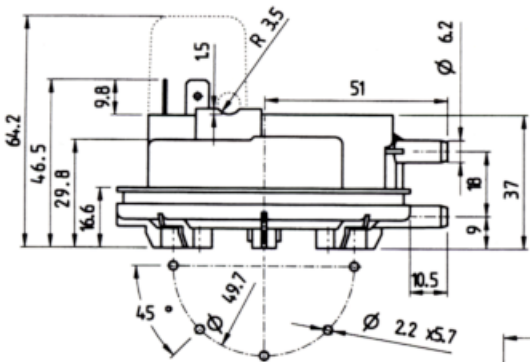
Switching point Table D-Adjustable Dead Band above (Pa)



Switching point Table E-Adjustable Dead Band above (Pa)

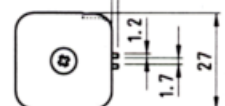
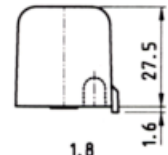


**DIMENSIONS (MM) & ELECTRICAL**



AMP 2

AMP 1

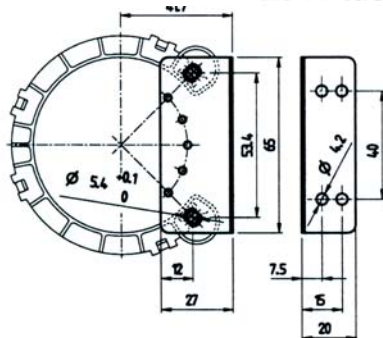
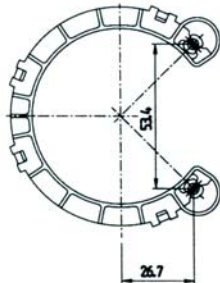


Cover with seal and PT screw  
D306

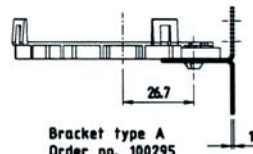
Cover without seal with PT screw  
Order no. 100307

Contact safety guard with PT screw

Cable exit AMP2  
Order no. 100309



Fastening clip  
Order no. 100294 s=0.8-1.1  
Order no. 100293 s=1.8-2.1



Bracket type A  
Order no. 100295

**ORDERING INFORMATION**

Model Number:

Consult Factory but in General

- 1) Specify Model 605.S
- 2) Specify Switch Point
- 3) Specify Dead Band
- 4) Specify Mounting Position
- 5) Specify Electrical Connection

Accessories & Options:

Switch points above 1.6" w.c.- Consult Factory

- 100294: Fastening clip
- 100293: Fastening Clip
- 100295: Type A mounting bracket

Typically an OEM product, please call us to discuss your application.