

HUBA

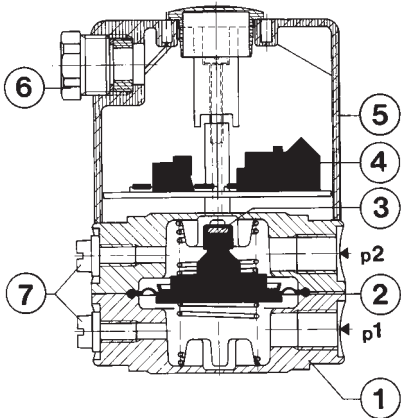
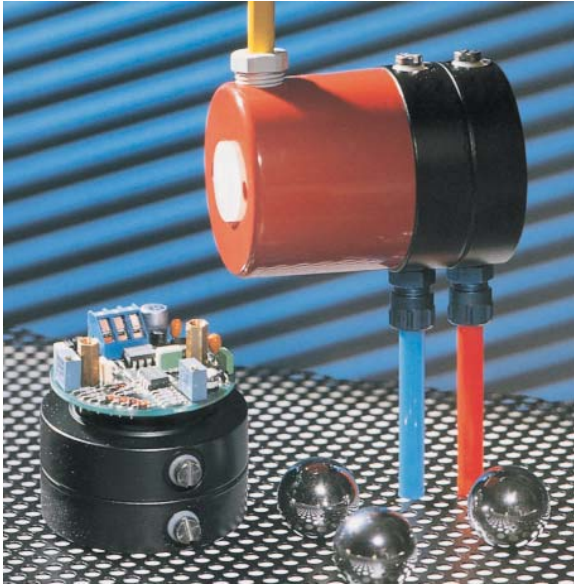
652 Series Differential Pressure Transmitter

Liquids And Gases, F.S. Ranges 20 inches w.c to 15 PSID

DESCRIPTION

The differential pressure transmitter series 652 are especially suited for the continuous level or flow monitoring of neutral and slightly aggressive liquids and gases in heating, ventilation and process applications.

The pressure or differential pressure to be monitored acts on a diaphragm, which in turn acts against a spring. A permanent magnet fastened on the diaphragm moves in the direction of a hall sensor mounted outside the pressure case. This sensor emits an electrical signal which is proportional to the magnetic field. The signal is linearized, compensated and amplified.



- 1) Pressure case
- 2) Diaphragm
- 3) Permanent magnet
- 4) Printed Circuit board
- 5) Cover
- 6) PG9 Strain Relief
- 7) Vent
- P1 Higher Pressure, Lower Vacuum
- P2 Lower pressure, Higher Vacuum

SPECIFICATIONS

Pressure Ranges: See ordering information

Max Pressure:

- 145 PSI range 20.0" w.c.
- 290 PSI range 7 PSID and higher

Rupture pressure: 435 PSI

Linearity: < +/- 1.5 % fs

Hysteresis: < +/- 1.5 % fs

Zero point offset < +/- 1.0 % fs

Pressure case: Anodized black aluminium, brass or nickel-plated brass

Cover: plastic

Diaphragm: NBR-based, EPDM, Viton

Materials Coming Into Contact With Media:

- 430F SS
- 304 SS
- 301 SS
- AISI A2 Alloy screws
- Polyacetate-C / Polyamide

Operating Temperature: NBR-based, 32-176°F(0-80°C); FPM, 14-176°F(-10-80°C); EPDM, 14-176°F(-10-80°C)

Operating Temperature PC Board: -13-140°F(-25-60°C)

- HIGH OVERPRESSURE SAFETY PROTECTION
- RUGGED MECHANICS WITH HIGH OPERATING RELIABILITY
- COMPATIBLE WITH SLIGHTLY AGRESSIVE LIQUIDS AND GASES
- ATTRACTIVE PRICE TO PERFORMANCE RATIO

Temperature Drift: 0.08% fs / degree from Calibration Temperature (20°C)

Response Time: < 10 ms

Pressure connections: 1/8 NPT female thread

Weight Aluminium Pressure Case :13 oz

Weight Brass/Nickel-Plated Brass Case: 1.9 lbs

Installation: The transmitter is calibrated in the factory with the diaphragm positioned vertically. In the case of liquid media, vent screw should be oriented up and the pressure connections down.

Outputs: 0 -10 V, 3-wire cable ; 4-20 mA 3-wire cable

Installation Warmup Time: 15 minutes

Power supply: 20 - 30 VDC

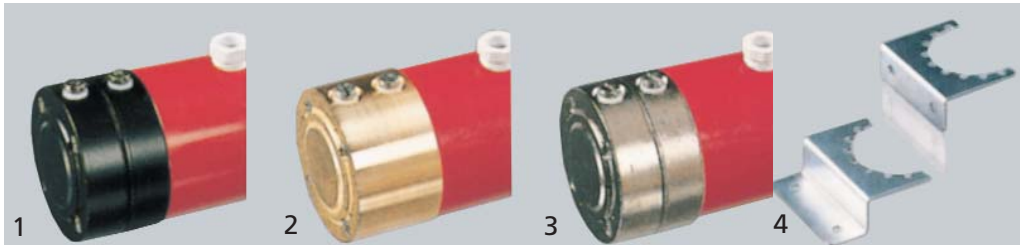
Current load: ≤ 300 Ohm

Voltage load: ≤ 10 KOhm

Current Consumption:

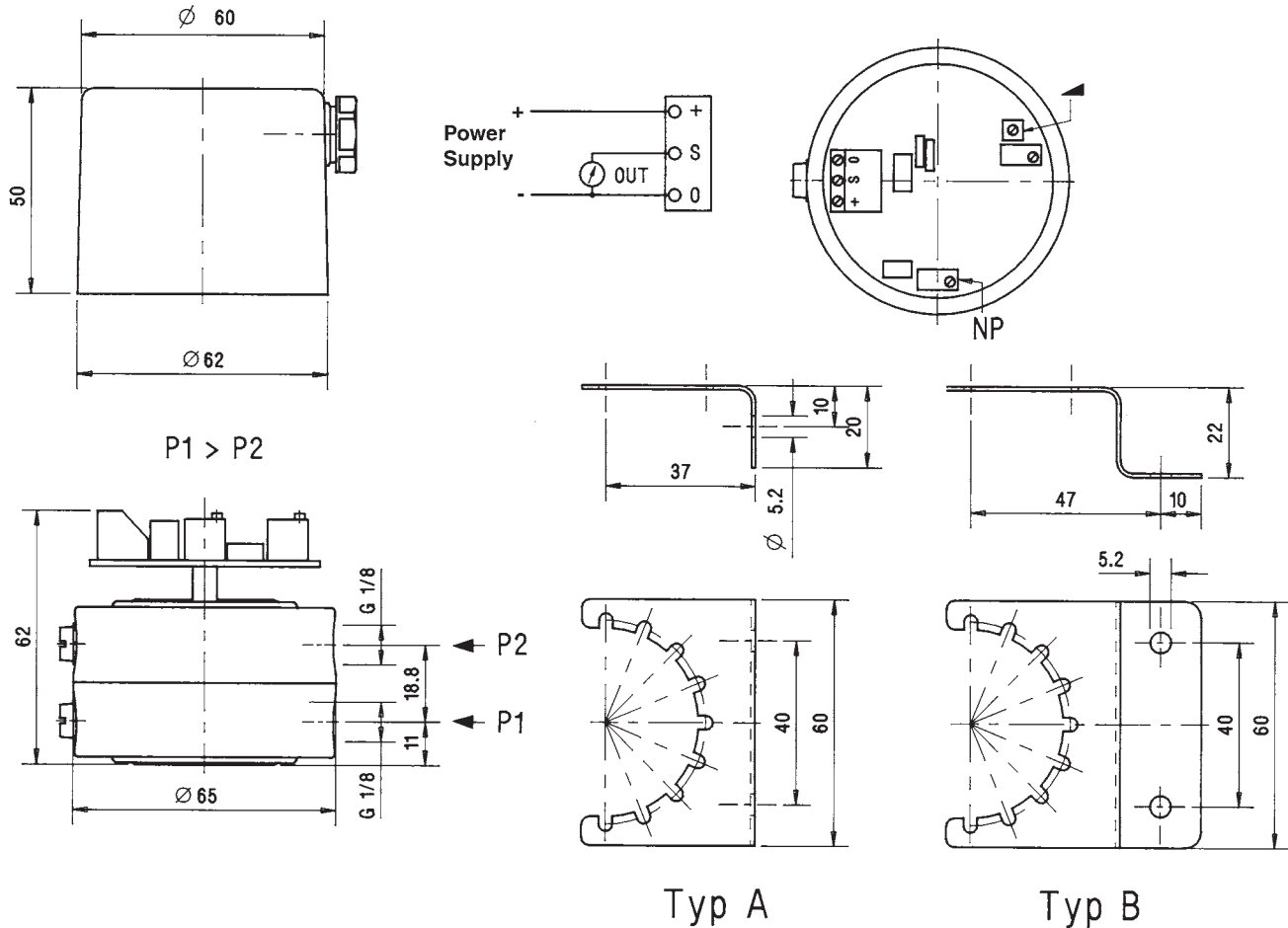
0 - 10 V- 35 mA

4 - 20 mA- max. 55 mA



- Case material
- 1) Anodized Aluminum
- 2) Brass
- 3) Nickel Plated Brass
- 4) Mounting brackets

DIMENSIONS (MM) & ELECTRICAL



ORDERING INFORMATION

MODEL NUMBER = 652.9ABCDEF GH

Example: 652.934100N20

A=Range	B=Output	C=Linearity	D=Power	E=Elect. Connections	F=Press. Connections	G=Case	H=Diaphragm
1=0-20" w.c. 3= 0-7.0 PSID 4= 0-15 PSID	4=4-20mA 0=0-10V	1=±1.5% fs	0=20-30VDC	0=Screw Terminals	N=1/8 FNPT	2=Nickel Plated Brass 0=Anodized Aluminum 1=Brass	0=NBR-Based 1=FPM 2=EPDM

Accessories & Options:
 A01: Type A mounting bracket
 A02: Type B mounting bracket
 Higher accuracies on request
 Special Ranges Available On Request

ASK US ABOUT OUR....

LOW PRESSURE AIR TRANSMITTERS & SWITCHES

