

DG08

Ball-Type Flow Indicator

- **Sturdy, robust design**
- **Available in red bronze or stainless steel**
- **Resistant to high heat**
- **Domed sight glass for easy view of ball**



Description:

The DG08 mechanical flow indicator is used for visual verification of the flow of liquids or gases. The liquid or gas being monitored lifts the PTFE ball from its valve seat. As the flow increases, the ball in the domed sight glass becomes increasingly visible. These devices are made of high-quality materials, allowing them to be used with a great variety of liquids or gases.


Typical Applications:


DG08 mechanical flow indicators are used to monitor the flow of liquid or gaseous media. These devices are especially suited for use in industrial systems and for process monitoring as well as for basic monitoring of compressors, ventilators, fans and many other types of similar equipment.

In North & South America Find Our Products On-Line at Clark Solutions:

www.clarksol.com



 **PKP Process Instruments Inc.**
10 Brent Drive · Hudson, MA 01749
Tel: 978-212-0006 · Fax: 978-568-0060
Email: sales@clarksol.com · Internet: www.clarksol.com

 **PKP Prozessmesstechnik GmbH**
Borsigstraße 24 · D-65205 Wiesbaden
Tel: 49 (0) 6122-7055-0 · Fax: 49 (0) 6122-7055-50
Email: info@pkp.de · Internet: www.pkp.de

Models:

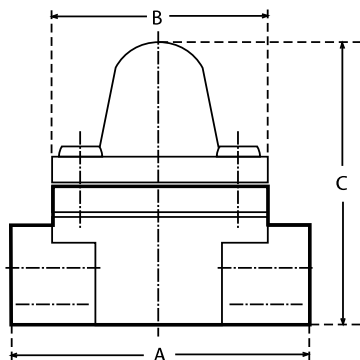
Materials: Red bronze or stainless steel

Flow Rates:

NPT / G	Water GPM / l/min	
	Ball/ initial movement	Ball/ fully visible
1/4"	0.03 / 0.1	0.26 / 1.0
3/8"	0.03 / 0.1	0.26 / 1.0
1/2"	0.03 / 0.1	0.26 / 1.0
3/4"	0.63 / 2.4	1.37 / 5.2
1"	0.71 / 2.7	1.45 / 5.5
1 1/4"	2.90 / 11	4.23 / 16
1 1/2"	4.23 / 16	5.55 / 21

Dimensions:

NPT / G	A in inch / mm	B in inch / mm	C in inch / mm	Weight in lbs. / kg
1/4"	3.00 / 76	2.48 / 63	3.10 / 79	1.60 / 0.72
3/8"	3.00 / 76	2.48 / 63	3.10 / 79	1.50 / 0.69
1/2"	3.00 / 76	2.48 / 63	3.10 / 79	1.43 / 0,65
3/4"	3.50 / 89	2.48 / 63	3.75 / 95	2.86 / 1.30
1"	3.50 / 89	2.48 / 63	3.75 / 95	2.75 / 1.25
1 1/4"	4.60 / 117	2.95 / 75	4.90 / 125	5.50 / 2.50
1 1/2"	4.60 / 117	2.95 / 75	4.90 / 125	5.18 / 2.35



In North & South America Find Our
Products On-Line at Clark Solutions:
www.clarksol.com

Model Key:

Order Number: DG08. E. 10. 0

Ball-Type Flow Indicator

Materials:

R = Red bronze
E = Stainless steel

Connections:

08N = 1/4" NPT	08 = G 1/4
10N = 3/8" NPT	10 = G 3/8
15N = 1/2" NPT	15 = G 1/2
20N = 3/4" NPT	20 = G 3/4
25N = 1" NPT	25 = G 1
32N = 1 1/4" NPT	32 = G 1 1/4
40N = 1 1/2" NPT	40 = G 1 1/2

Special Features:

0 = None
1 = Please specify in writing.

Technical Specifications:

Max. pressure: 232 psi / 16 bar

Max. temperature: 392 °F / 200 °C

Materials:

DG08.R:

Housing: Red bronze
Sight glass: Borosilicate glass
Pins: Stainless steel
Indicator ball: PTFE
Gasket: Klingsil C-4400

DG08.E:

Housing: Stainless steel
Sight glass: Borosilicate glass
Pins: Stainless steel
Indicator ball: PTFE
Gasket: Klingsil C-4400