

NOSHOK

Series 400/500 Stainless Steel Pressure Gages

1 1/2", 2 1/2", 4" & 6" Dry & Liquid filled, F.S. Ranges Vacuum to 30,000 PSI

DESCRIPTION

Noshok 400 (dry) and 500 (liquid filled) series all stainless steel gages are the ultimate in corrosion resistant, heavy duty, vacuum and pressure gauges. They are used in corrosive service world-wide where ruggedness and reliability are critical. Typical applications include chemical and petroleum refineries, pharmaceutical, off-shore drilling and production, papermills, fertilizer, etc.

MODELS

Table 1

Model	Dial Size	Connection	Dry/Glycerine Filled
15.400	1 1/2"	1/8" NPT Bottom	D
15.410	1 1/2"	1/8" NPT Center Back	D
25.400	2 1/2"	1/4" NPT Bottom	D
25.410	2 1/2"	1/4" NPT Center Back	D
25.500	2 1/2"	1/4" NPT Bottom	G
25.510	2 1/2"	1/4" NPT Center Back	G
40.400	4"	1/2" NPT Bottom	D
40.410	4"	1/2" NPT Lower Back	D
40.500	4"	1/2" NPT Bottom	G
40.510	4"	1/2" NPT Lower Back	G
60.400	6"	1/2" NPT Bottom	D
60.410	6"	1/2" NPT Lower back	D
60.500	6"	1/2" NPT Bottom	G
60.510	6"	1/2" NPT Lower back	G

SPECIFICATIONS

SIZES: 1 1/2, 2 1/2, 4 and 6 inch sizes

CONNECTION: 1/8" NPT on 1 1/2" sizes, 1/4" NPT on 2 1/2" sizes, 1/2" NPT on 4" and 6" sizes. Available in bottom and back configurations.

CASE: 304 Stainless Steel

LENS: Instrument glass on 1 1/2" and 4" sizes, Trogamide on 2 1/2" size, Safety glass on 6" size.

BOURDON TUBE: 316 Stainless Steel "C" tube to 600 PSI, coiled safety tube above 600 PSI

MOVEMENT: Stainless Steel

ACCURACY: 2.5% Full Scale on 1 1/2" size; 1.5% Full Scale on 2 1/2" size; 1% Full Scale on 4" and 6" sizes.

AVAILABLE RANGES: Vacuum and Compound through 30,000 PSI. Dependent on model and size.

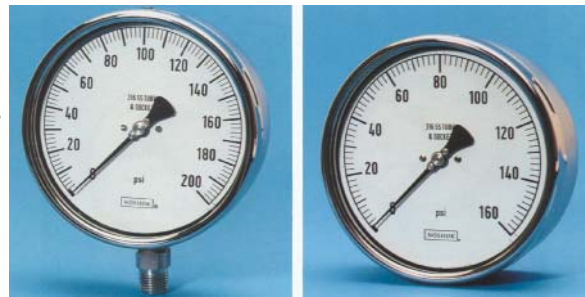
SAFETY: Models 40.400, 40.410, 40.500, 40.510, safety relief disk on back and top of case; model 60.400, 60.410 safety relief disk on rear of case.

OPTIONS AND ACCESSORIES: Panel mounting options, orifices, adjustable pointers, max indicating pointers, rubber case protectors, special dials, metric dials, special connections and more.

WORKING PRESSURE DYNAMIC: 60% of dial range

STATIC: 90% of dial range

TEMPERATURE: 400 SERIES: 40 Degrees F to 260 Degrees F (-40 Degrees C to 127 Degrees C) 500 SERIES: 0 Degrees to 160 Degrees F (-18 Degrees to 71 Degrees C)



60.400 & 60.410 Dry Pressure Gauge



60.400 & 60.410 Liquid Filled Pressure Gauge

OPTIONS

Flanges for Panel Mounting: Polished stainless steel front flanges (**SS FF**) are available for flush panel mounting on models 25.510, 40.400, 40.410, 60.400, 60.410, 40.500, 40.510, 60.500, 60.510.

Panel Mount Clips(**PMC**): Available for flush mounting models 25.410 & 25.510. The PMC is easily field installed on the gage diameter into pre-formed grooves in the case. The narrow gage bezel or an optional polished flange ring (**FR**) which is 20 % larger in size than the gage bezel is on the front of the panel.

Maximum Indicating pointers(**MIP**): Useful to identify system spikes. MIP's add 1% error to the gage (2% for ranges under 60 PSI) due to the added load on the bourdon tube. Available on most models except 1 1/2".

Solid Front Safety Gages: Available option for all 2 1/2", 4" & 6" sizes.

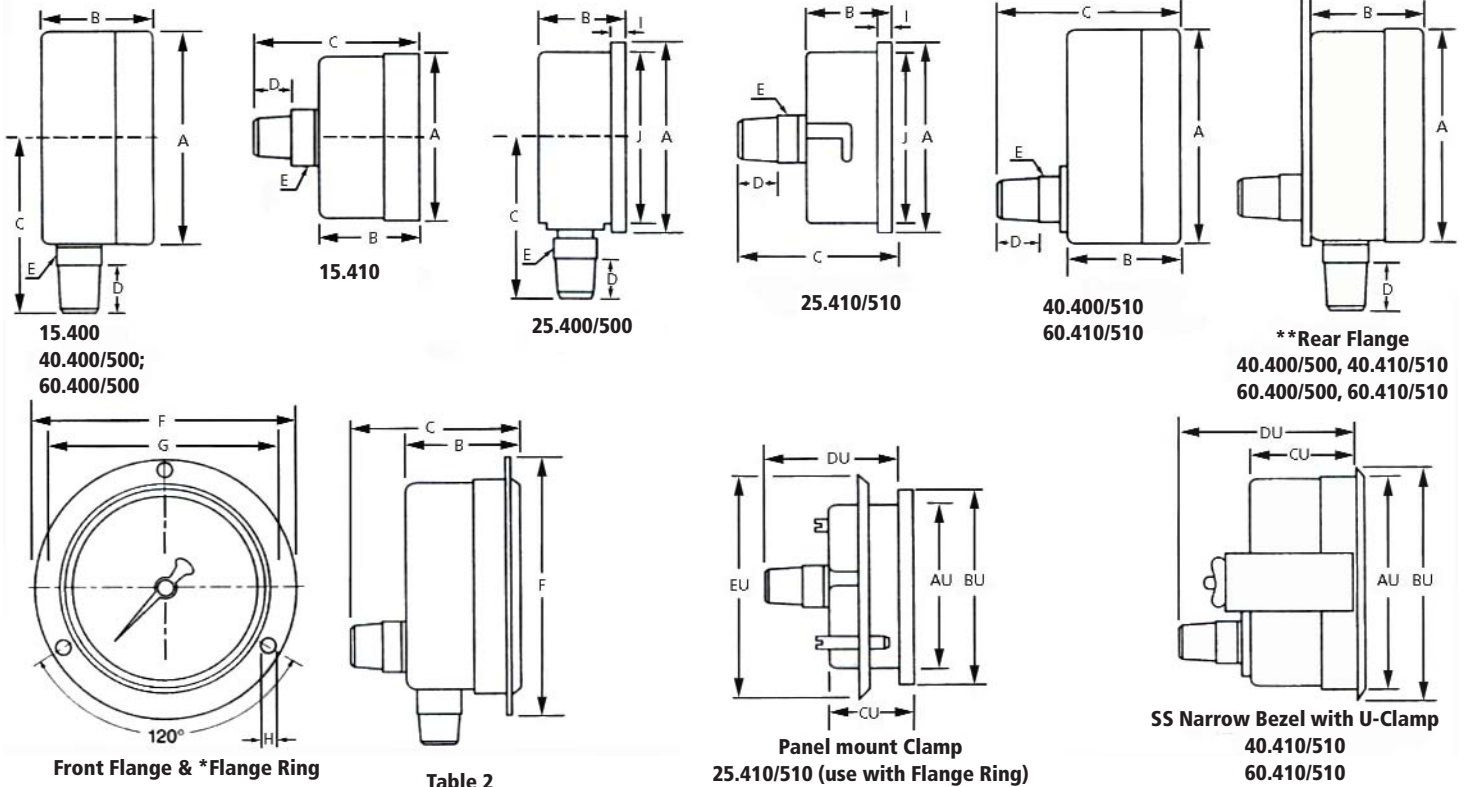
Ammonia Gages: Ammonia Refrigeration Gages with dials reading in both pressure and temperature are available in 2 1/2" and 4" sizes.

Metric Dials: Dual scale metric dials in PSI/BAR, PSI/kPa & PSI/kg/cm² are available for most models.

Special Connections: Consult factory for metric threads, female threads, straight threads (flare or swivel type), high pressure connections and special o-ring type connections.

Orifices: Threaded 316SS orifices (.032" I.D.) are available on all 400 and 500 series gages. They restrict the flow of rapidly increasing and decreasing pressures, thereby lessening the immediate effect of pulsations and pressure spikes.

DIMENSIONS (MM)



*The Flange Ring (FR) is only for use with models 25.410/510 and must be used in conjunction with the panel Mount Clamp (PMC). It does not have mounting holes.

Table 2

Model	A	B	C	D	E	F	G	H	I	J
15.400	40	26	38	12	14	-	-	-	-	-
15.410	40	26	41	10	14	-	-	-	-	-
25.400	69	32	57	14	14	-	-	-	5	62
25.500	69	32	57	14	14	-	-	-	5	62
25.410	69	32	57	14	14	85	-	-	5	62
25.510	69	32	57	14	14	85	-	-	5	62
40.400	101	51	87	20	22	132	116	4.8	-	-
40.500	101	51	87	20	22	132	116	408	-	-
40.410	101	51	85	20	22	132	116	4.8	-	-
40.510	101	51	85	20	22	132	116	4.8	-	-
60.400	160	60	118	20	22	196	178	5.8	-	-
60.500	160	60	118	20	22	196	178	5.8	-	-
60.410	160	61	93	20	22	196	178	5.8	-	-
60.510	160	61	93	20	22	196	178	5.8	-	-

** Dimensions of Rear Flange are the same as the Front Flange

Table 3

GAGES WITH PANEL MOUNT CLAMP OR NARROW BEZEL WITH U-CLAMP					
Model	AU	BU	CU	DU	EU
25.410	62	69	27	52	75
25.510	62	69	27	52	75
40.410	101	105	47	81.5	-
40.510	101	105	47	81.5	-
60.410	160	174	55.5	87.5	-
60.510	160	174	55.5	87.5	-

ORDERING INFORMATION

ORDER NUMBER A-B-C

- 1) A= Specify Model (Table 1)
- 2) B= Specify Range (Table 4)
- 3) C= Specify Options (See Bolded items under "Options")

EXAMPLE:

60.500-160PSI

Table 4	MODEL							
	15.400/410		25.400/410 25.500/510		40.400/410 40.500/510		60.400/410 60.500/510	
RANGE	Fig. Int.	Grad. Int.	Fig. Int.	Grad. Int.	Fig. Int.	Grad. Int.	Fig. Int.	Grad. Int.
30" Hg Vac	-	-	5" Hg	0.5 PSI	5" Hg	0.2 PSI	5" Hg	0.5" Hg
30"VAC/15 PSI	-	-	10"/5 PSI	1"/0.5 PSI	10"/5 PSI	1"/0.5 PSI	10"/5 PSI	1"/0.5 PSI
30"VAC/30PSI	-	-	10"/10 PSI	1"/0.5 PSI	10"/10 PSI	1"/0.5 PSI	10"/10 PSI	1"/0.5 PSI
30"VAC/60PSI	-	-	10"/10 PSI	1"/1 PSI	10"/10 PSI	1"/1 PSI	10"/10 PSI	1"/1 PSI
30"VAC/100PSI	-	-	30"/10 PSI	2"/1 PSI	30"/10 PSI	2"/1 PSI	30"/10 PSI	2"/2 PSI
30"VAC/160PSI	-	-	30"/20 PSI	5"/2 PSI	30"/20 PSI	5"/2 PSI	30"/20 PSI	5"/2 PSI
30"VAC/200PSI	-	-	30"/20 PSI	5"/2 PSI	30"/20 PSI	5"/2 PSI	30"/20 PSI	5"/5 PSI
30"VAC/300PSI	-	-	30"/50 PSI	10"/5 PSI	30"/50 PSI	10"/5 PSI	30"/50 PSI	10"/5 PSI
0-15 PSI	-	-	1 PSI	0.1 PSI	1 PSI	0.1 PSI	1 PSI	0.1 PSI
0-30 PSI	5	1	5 PSI	0.2 PSI	5 PSI	0.2 PSI	5 PSI	0.2 PSI
0-60 PSI	5	0.5	5 PSI	0.5 PSI	10 PSI	0.5 PSI	10 PSI	0.5 PSI
0-100 PSI	10	1	10 PSI	1 PSI	10 PSI	1 PSI	10 PSI	1 PSI
0-160 PSI	20	1	20 PSI	1 PSI	20 PSI	2 PSI	20 PSI	2 PSI
0-300 PSI	50	2	50 PSI	2 PSI	50 PSI	2 PSI	50 PSI	2 PSI
0-600 PSI	50	5	50 PSI	5 PSI	100 PSI	5 PSI	100 PSI	5 PSI
0-1,000 PSI	-	-	100 PSI	10 PSI	100 PSI	10 PSI	100 PSI	10 PSI
0-2,000 PSI	-	-	200 PSI	20 PSI	200 PSI	20 PSI	200 PSI	20 PSI
0-3,000 PSI	-	-	500 PSI	20 PSI	500 PSI	20 PSI	500 PSI	20 PSI
0-5,000 PSI	-	-	500 PSI	50 PSI	500 PSI	50 PSI	500 PSI	50 PSI
0-10,000 PSI	-	-	1000 PSI	100 PSI	1000 PSI	100 PSI	1000 PSI	100 PSI
0-15,000 PSI	-	-	3000 PSI	100 PSI	3000 PSI	100 PSI	3000 PSI	100 PSI
0-20,000 PSI	-	-	-	-	2000 PSI	200 PSI	2000 PSI	200 PSI
0-30,000 PSI	-	-	-	-	5000 PSI	200 PSI	5000 PSI	200 PSI