

## EQUFLOW

### Brass Series Turbine Flow Sensor

Brass, PVDF & Ruby wetted parts, F.S. ranges of 2, & 20 lpm, Frequency Output

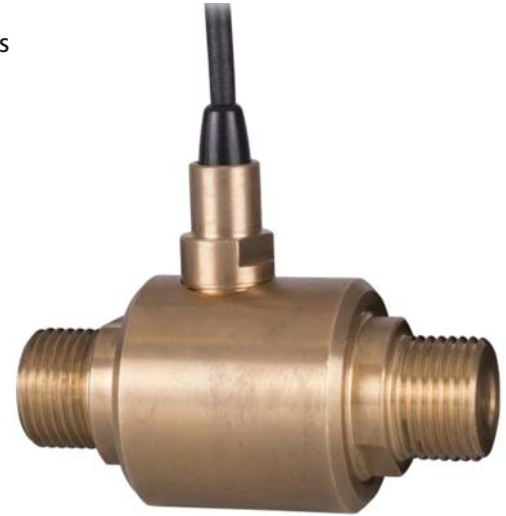
#### DESCRIPTION

Equflow brass series flow sensors have low flow sensing capabilities in a wide range of applications, and are suitable for clear, opaque, neutral, and compatible liquids. It has a rugged brass housing.

An ultra light-weight turbine follows the fluctuation of flow very accurately and generates a high resolution IR reflected digital output signal.

K-factors (pulses per liter) are factory determined and provided for each flow tube. Customer specified K-factors can be accommodated and are programmed at the factory.

External optional electronic packages include model PD6300 Flow rate indicator and totalizer and PD6310 batch controllers. Rich in features, these products provide complete solutions for monitoring and batching applications.



#### Features

- Turbine flowsensor with high resolution output
- Flow measuring by revolutionary IR turbine reflection
- Brass, PVDF & Ruby parts are excellent for fuel and fuel additives
- High accuracy and repeatability
- Suitable for opaque liquids
- Programmable K-factor (at factory)

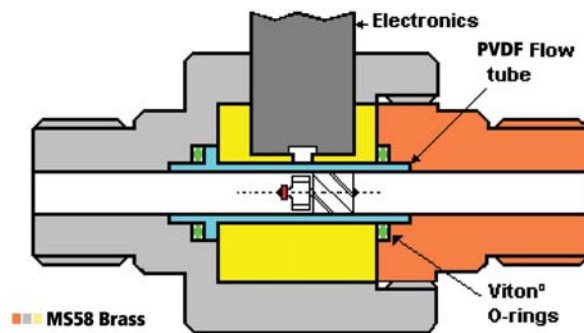
#### SPECIFICATIONS

Patent No. US5388466

##### GENERAL

Model	0045P	0085P
Inner diameter in mm	4.5	8.5
Flow range	0.1 - 2 L/min	0.5 - 20 L/min
Accuracy	1% of reading	1% of reading
Repeatability	< 0.15 %	< 0.15 %
Wetted parts	MS58 Brass/PVDF/Ruby	
O-ring Seals	Viton or EPDM	Viton or EPDM
Tube connection thread	1/4" NPT/BSP	3/8" or 1/2" NPT/BSP
Liquid temperature in °C	-20 to +80	-20 to +80
Max. pressure at 20° C in bar (psi)	25 (363)	25 (363)
Viscosity in cSt.	0.8 - 10	0.8 - 10
*K factor (water) in pulse/Litre (nominal)	100,000	4,800
Power supply	5 - 30 Vdc	5 - 30 Vdc
Output signal	5 - 30 V sq. wave	5 - 30 V sq. wave
Power consumption	34 mA at 5 V	34 mA at 5 V
Electrical lead	PVC 1 meter	PVC 1 meter
Recommended Line filter	100 µm	100 µm

\*K-factors (pulses per liter) are factory determined and provided for each flow tube. Customer specified K-factors can be accommodated and are programmed at the factory.

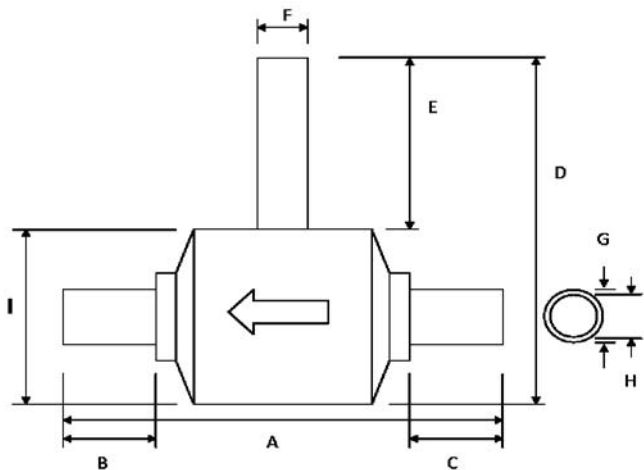
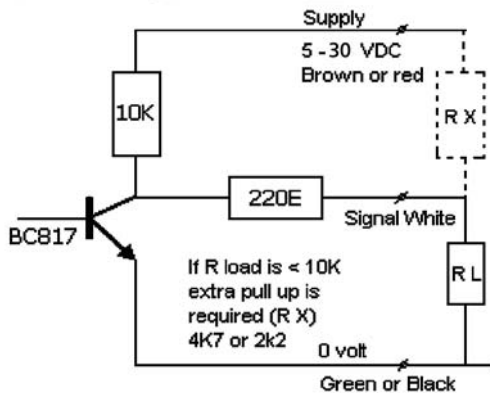


**Working Principal:**

A static worm forces the passing fluid to spin. The spinning fluid drives a rotor with reflectors into a frictionless rotation. A high resolution infrared sensor determines the rate of flow by counting the passing reflections. The set up even allows the flow of opaque liquids to be determined accurately. The ultra low mass of the rotor guarantees a quick response to changes in the rate of flow

**Wiring:**

Power Supply 5-30 Vdc or 5 Vdc (low voltage option)  
Output All Sensors: NPN square wave



Dim. (MM)	0045- NPT	0045-BSP	0085- NPT	0085- BSP
A	72.5	67	72.3	67.2
B	14.7	14.4	14.8	12.35
C	14.7	14.4	14.8	12.35
D	68.5	68.5	71.2	71.2
E	28.5	28.5	30.3	30.3
F	12	12	12	12
G	13.8	13.8	17.2	17.2
H	4.5	4.5	8.85	8.85
I	40	40	40	40

**ORDERING INFORMATION**

**ABCDEF**  
**0045PNP01XA**

A Model	B Connection	C Cable Type	D Cable Length	E Version	F Power
0045P= 4.5 mm/0.1-2 l/min 0085P= 8.5 mm/1.0-20 l/min	N= NPT B= BSP	P= PVC	01= 1 meter (Standard) 02= 2 meters	X= Fixed housing	A= 5-30 VDC

**Ask About Our Other Equflow Products.....**

- Standard Flow Sensor
- Disposable Flow Sensor
- Electronic packages for use with Flow Meters
  - PD6300 Flow rate indicator and totalizer
  - PD6310 batch controllers

