

## GOTEC

### EDS 035 Miniature Diaphragm Pump

*Solenoid Operated, Flow to 7 l/h, Pressure to 0.25 Bar (3.63 PSI)*

#### DESCRIPTION

Model EDS 035 pump is ideally suited for transfer of compatible liquid media at low pressures and flow rates.

The pump operation is straight forward with a solenoid moving a diaphragm within a plastic housing that has opposing duckbill check valves mounted in the pump inlet and outlet. The diaphragm and check valve material is EPDM. Inlet and outlet connections are barbed hose type and the pump housing rotates to best orient the barbs to the most suitable mounting position.

The pump is useful for many fluid transfer applications in equipment for HVAC, Medical, Automated Chemistry, and General Automation Applications.

#### SPECIFICATIONS

##### GENERAL

Maximum Pressure- 0.25 Bar (3.63 PSI)  
 Maximum Flow Rate- 7 l/h (1.54 GPH)  
 Maximum Suction- 1 m (3.28 feet)  
 Viscosity Range- 1...600 mm<sup>2</sup>/s  
 Filter- 100 Mesh  
 Supply Voltage- 12, 24, 110, 230VAC, diode rectified  
 Frequency- 50/60 Hz  
 DC Operation: Optional model PD-106 DC driver board  
 Power Consumption- 18 W  
 Operating Factor- 100% continuous duty@20°C  
 Ambient/Process Temperature Range- 1 to 50°C (33.8 to 122°F)  
 Dimensions- See Dimension Drawing

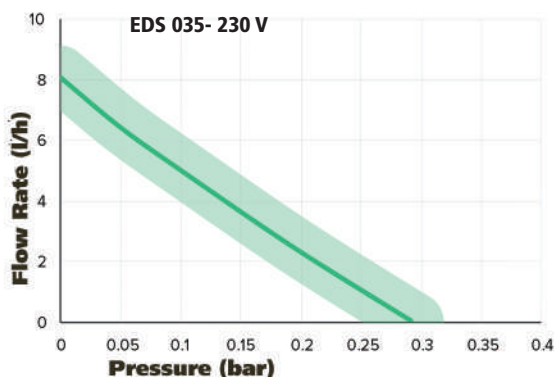


#### FEATURES

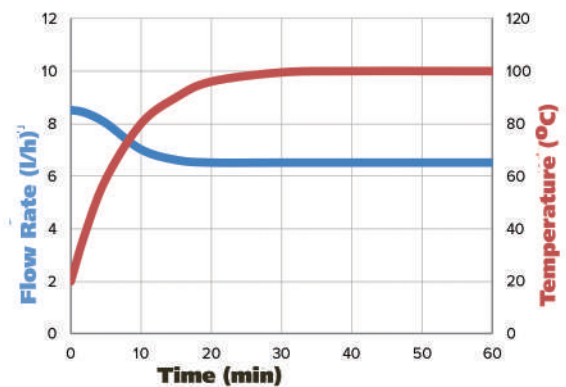
- o Inert Wetted Parts
- o Simple Opposing Check Valve Operation
- o Small Size
- o Easy Mounting
- o Rated for Continuous Duty
- o Low Power Consumption

Pump Housing Material- PVDF (wetted) and PEEK (non-wetted)  
 Electrical Connections- Male DIN Spade (3 x 6.3 mm x .08 mm), ISO/DIN 43650 form B, or 130 mm flying leads  
 Insulation: Class F-100% ED / 20 [°C] with heat sink Class I  
 Piping Connections- 1/4 " O.D. Barb  
 Optional Mounting- Integral Heat Sink w/2ea 1/8" Holes 3/4" on center (see drawing)  
 Weight- 90 g

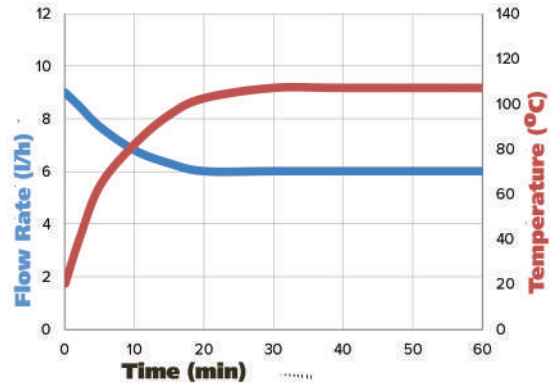
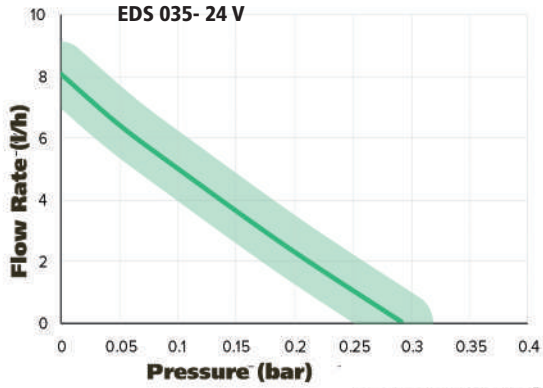
#### FLOW CURVES- PERFORMANCE AND AFFECT OF COIL TEMPERATURE RISE ON FLOW RATE



Tested with 20°C of water at ambient temperature

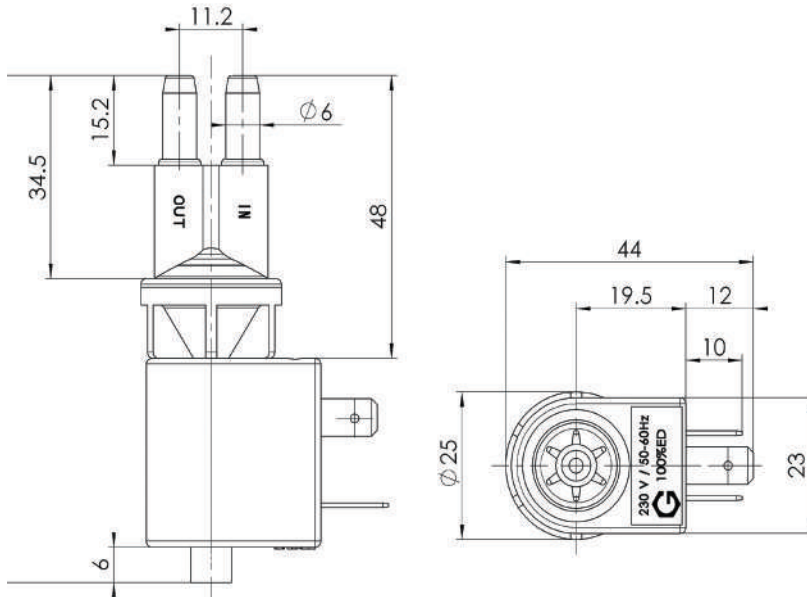


## EFFECT OF COIL TEMPERATURE RISE ON FLOW RATE

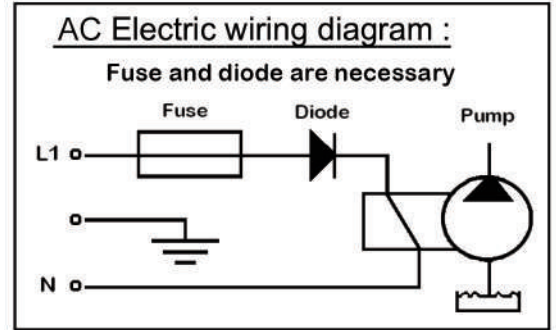


Tested with 20°C of water at ambient temperature

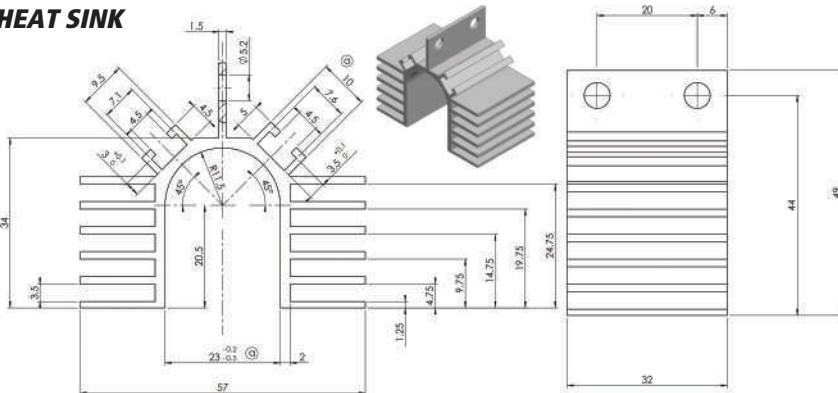
## DIMENSIONS (MM)



## ELECTRICAL



## HEAT SINK



## ORDERING INFORMATION

### ORDER NUMBER

**EDS-035-24V:** Pump With 24V Solenoid

**EDS-035-110V:** Pump With 110V Solenoid

Options:

**Model 106628-** Heat Sink

**Model 1N5406-** Diode

**Model PD-106-** DC driver board, 9-35 VDC in, 9-35V pulsed DC out