

GOTEC

EMX-25 Miniature Piston Pump

Solenoid Operated, Flow to 12 L/H (3.17 GPH), Pressure to 2.5 Bar (36.3 PSI)

DESCRIPTION

Model EMX-25 oscillating piston pump is a great solution for low volume liquid pumping applications where small size is a critical factor.

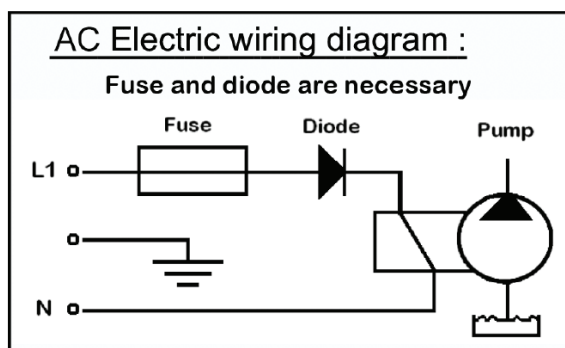
The piston size and the length of its displacement define the flow rate. The pressure limits itself automatically. The pump will run without damage when the liquid flow is stopped momentarily.

The precision ground machined elements, piston and bushing, guarantee minimum wear and exceptional component life. With only stainless steel connectors, piston and spring and PTFE or PPS valve tips in contact with the media, the pumps are suitable for a wide range of fluids and applications.

FEATURES

- Compact size, Light Weight
- Maintenance Free, Long Life
- Self Priming, Achieve 2.5 Bar
- AC or DC Operations
- Housing & Connection Options

ELECTRICAL WIRING



SPECIFICATIONS

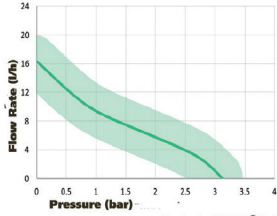
GENERAL

Supply Voltage	12, 24, 110, 230VAC, 50/60 Hz, diode rectified
Wetted Pump Materials	303, 304, 316, & 431 SS
Connectors	5/16", Barb
Piston	AISI 431 + Cr (1.4057 + Cr)
Springs	AISI 316 (1.4401)
Valves	PTFE or PPS
Solenoid Housing	Molded epoxy
Maximum Pressure	2.5 bar (36.3 PSI)
Maximum Flow	Standard Vers., 12 L/H (2.38 GPH)
Maximum Suction	0.5 Meters (19.7 inches w.c.)
Viscosity Range	1...600mm ² /s
Particle Tolerance	100 mesh
DC Operation	Optional model PD-106 DC driver board
Electrical Connections	Male DIN Spade (3 x 6.3 mm x .08 mm), ISO/DIN 43650 form B
Power Consumption	18 W
Insulation	Class F-100% ED / 20 [°C] with heat sink - Class I
Operating Factor	100% continuous@ 68oF
Ambient/Process Temperature Range	1 to 50oC (33.8 to 122oF)
Noise level (1m)	open flow = ~35 [dB(A)], Max. pressure = ~29 [dB(A)]
Optional Mounting	Integral Heat Sink w/2ea 1/8" Holes 3/4" on center (see drawing)
Weight	95 g (0.2 lb)

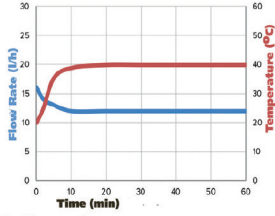
FLOW CURVE/PERFORMANCE CURVE/ETC.

DIMENSIONS (MM)

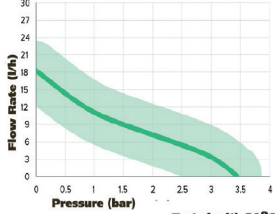
EMX25- 230V



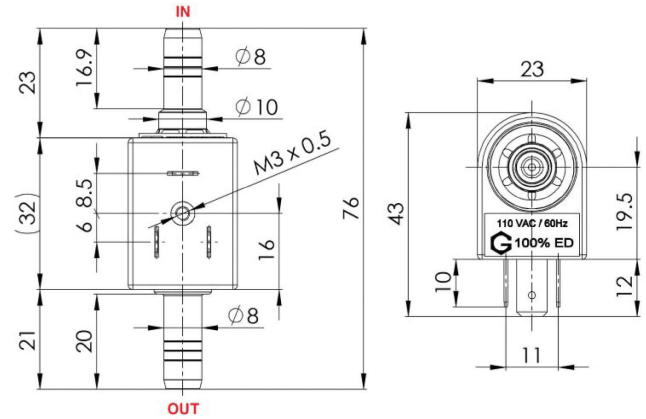
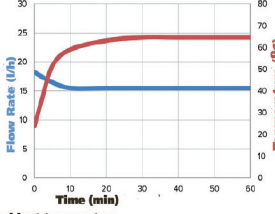
Tested with 20°C of water at ambient temperature



EMX25- 24V



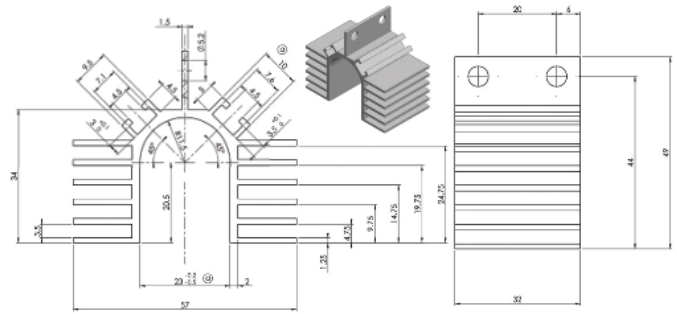
Tested with 20°C of water at ambient temperature



RUBBER MOUNTING BRACKET



HEAT SINK



ORDERING INFORMATION

ABCDE

EXAMPLE: EMX25TC24VS2V

A Model	B Serial Material	C Piston Coating	D Voltage	E Elec. Conn.	F # of Valves
*EMX25=5/16" Hose Barb *Consult us with your OEM fitting requirements	T=Teflon P= PPS	C=Chrome	12V=12V 24V=24V 110V=110V 230V=230V	S=DIN Spade	2V=2Valves

Special materials and connections are available in OEM quantities. Please consult us.

Options			
Model	Description	Model	Description
Model PD-106	DC driver board, 9-35 VDC in, 9-35V pulsed DC out	106628	Heat Sink
Model 1N5406	Diode		