

GOTEC**ETG-200 Oscillating Piston Pump**

*Solenoid Operated, Flow to 20 L/H (5.28 GPH)
Pressure to 20 Bar (290 PSI)*

DESCRIPTION

Model ETG-200 oscillating piston pump is a great solution for low volume liquid pumping applications where small size is a critical factor.

The piston size and the length of its displacement define the flow rate. The pump will run without damage when the liquid flow is stopped momentarily.

The precision ground machined elements, piston and bushing, guarantees minimum wear and exceptional component life. With stainless steel connectors, piston and spring and NBR o-ring and PPS valve tips in contact with the media, the pumps are suitable for a wide range of fluids and applications.

**SPECIFICATIONS****GENERAL**

Supply Voltage- 12, 24, 110, 230VAC, 50/60 Hz, diode rectified

Wetted Pump Materials-303, 304, 316, & 431 SS

Connectors: AISI 431 SS (1.4057)

Piston: AISI 431 + Cr (1.4057 + Cr)

Springs: AISI 316 (1.4401)

Valve Tips: PPS

O-ring: NBR

Maximum Pressure- 20 bar (290 PSI)

Maximum Flow- Standard Vers., 20 L/H (5.28 GPH)

Viscosity Range- 1....600mm²/s

Max. Suction: 0.2 m (7.87 inches w.c.)

Particle Tolerance- 100 mesh

DC Operation: Optional model PD-106 DC driver board

Electrical Connections- Male DIN Spade (3 x 6.3 mm x .08 mm), ISO/DIN 43650 form B

Power Consumption- 45 W

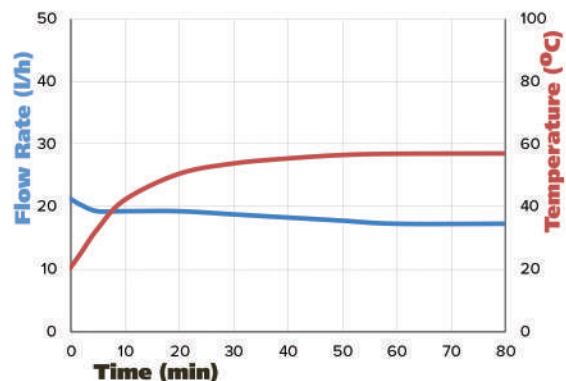
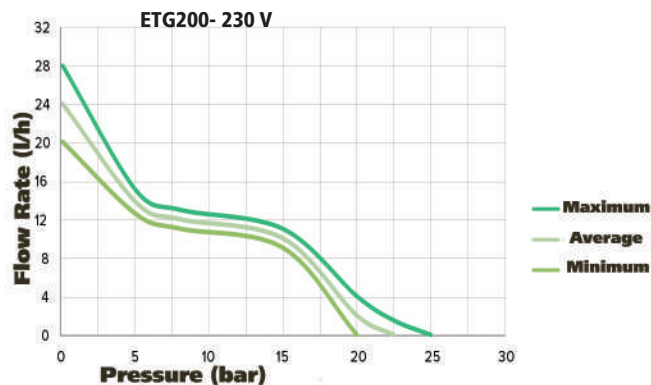
Insulation: Class H-100% ED / 20 [°C]

Class 2

Operating Factor- 100% continuous@ 68°F

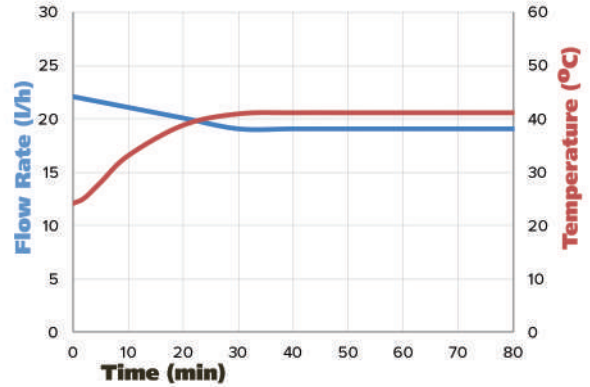
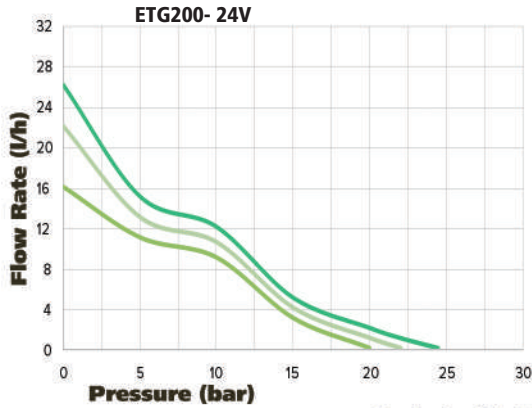
Ambient/Process Temperature Range- 1 to 50°C (33.8 to 122°F)

Weight- 560 g (0.97 lb)

LOW CURVES- PERFORMANCE AND AFFECT OF COIL TEMPERATURE RISE ON FLOW RATE

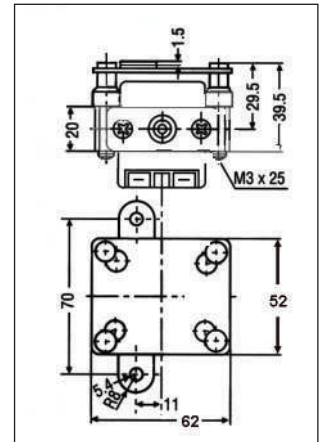
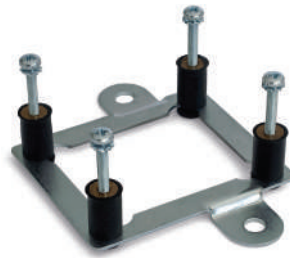
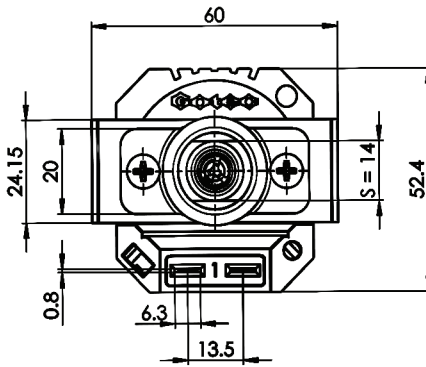
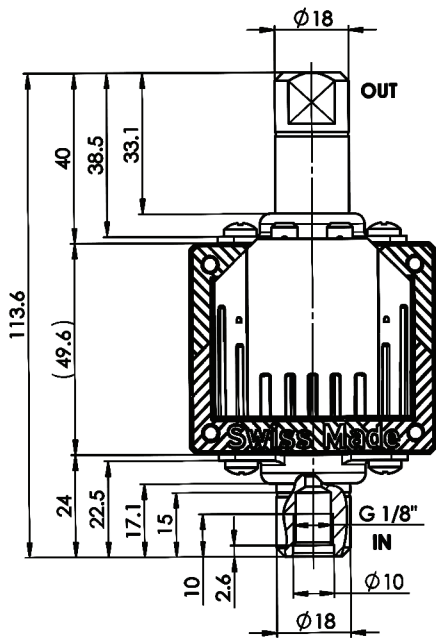
Tested with 20°C of water at ambient temperature

EFFECT OF COIL TEMPERATURE RISE ON FLOW RATE



Tested with 20°C of water at ambient temperature

DIMENSIONS (MM)



Model 19726.1 Mounting Plate

ORDERING INFORMATION

ABCDEF
ETG200PC24V

A Model	B Valve Material	C Piston Coating	D Voltage
*ETG200= G1/8 Female Threads *Consult us with your OEM fitting requirements	P= PPS	C=Chrome	110V=110V 24V=24V 230V=230V

Options	
Model	Description
Model PD-106	DC driver board, 9-35 VDC in, 9-35V pulsed DC out
Model 1N5406	Diode
106628	Heat Sink
19726.1	Mounting Plate
112170	Male G 1/8 to 1/8 NPT Male adapter

ELECTRICAL

