

**CLARK****Series PO 4000 Stainless Steel Rotary Vane Pumps***Flow to 760 GPH, Pressure to 260 PSI***DESCRIPTION**

The 4000 series rotary vane pumps are available in 7 different displacements from 325 to 740 GPH at 1450 rpm and are the latest edition of high technology volumetric pumps to our line. The pump housing, the rotor and every metallic component are AISI 303 stainless steel. The pumping chamber and the vanes are high impact carbon graphite. The self-lubricating property of polished stainless steel and carbon graphite makes this pump well suited for water and water based solutions.

Inlet and outlet ports are 1" NPT female threaded NBR or Viton seals available.

**SPECIFICATIONS**

Pump Housing: AISI 303 Stainless Steel  
Pumping Chamber: Carbon Graphite  
Ports: 1" NPT

Max Temperature : 70° C (158° F)

Seals: NBR (Viton upon request)

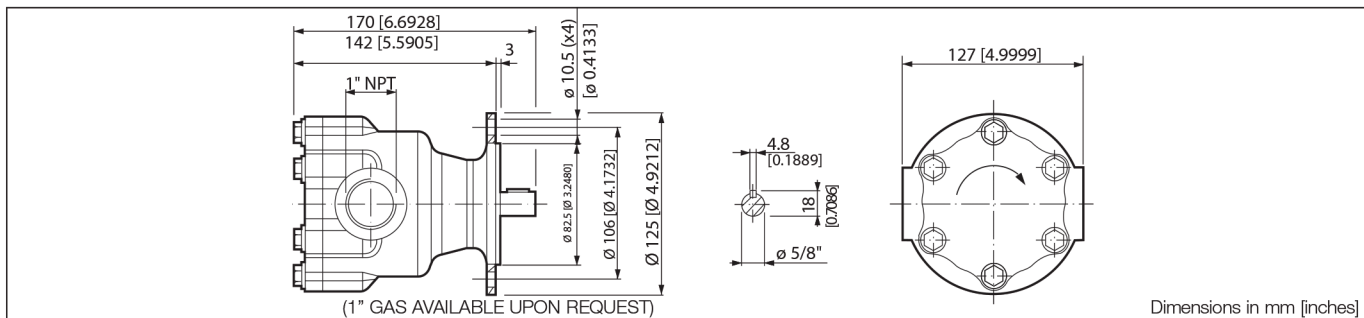
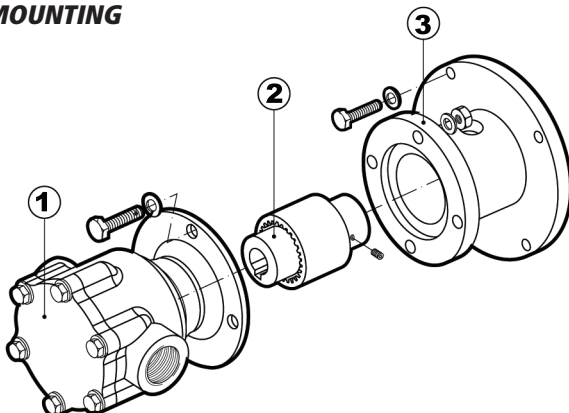
Max Motor Speed : 1725 rpm

Max System Pressure : 20 Bar (290 psi)

Mounting: NEMA 56C Adapter

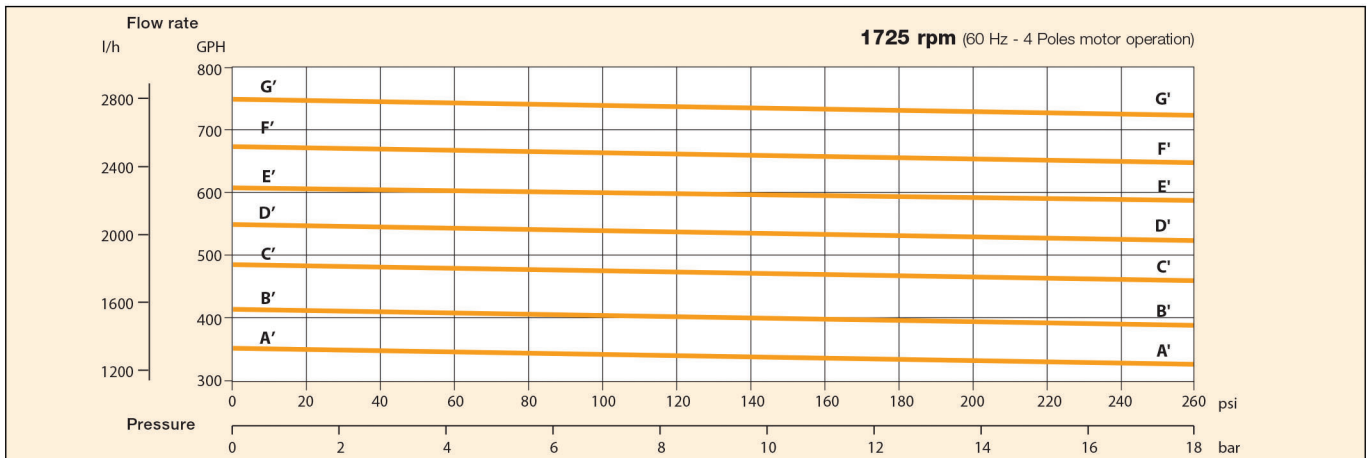
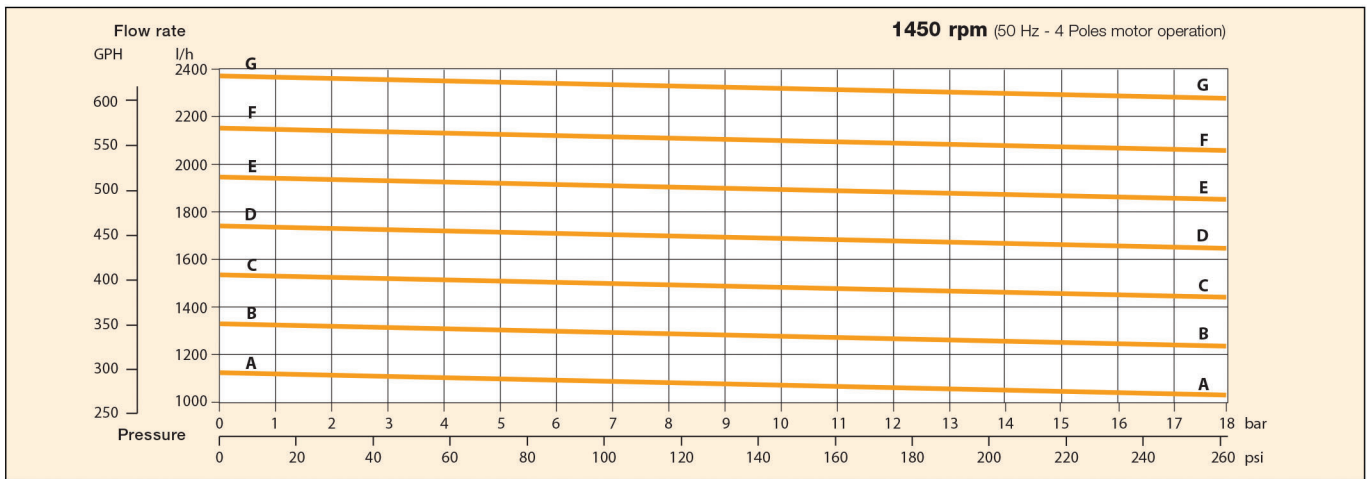
**TYPICAL APPLICATIONS**

- Car Wash
- Irrigation
- Cooling Systems
- Reverse osmosis systems

**DIMENSIONS (MM)****MOUNTING****Table 1**

#	P/N	Material	Description
1	Table 2	Stainless	Pump
2	211715	Cast Iron	NEMA 56C Coupling
3	211605	Aluminium	NEMA 56C-143TC-145TC Adapter With Screws

## PUMP MODELS & FLOW CURVES



Note: Characteristics at constant motor speed with water at 20 °C (68 F) - Figures of flow are averages - Pump weight 5.3 kg (11.6 Lb).  
For applications involving other fluids, high temperatures or unusual processing conditions, please consult the factory or an authorized Fluid-o-Tech distributor.

Table 2

Model	PO4010	PO4020	PO4040	PO4060	PO4080	PO4100	PO4120
Flow Figure	A-A	B-B	C-C	D-D	E-E	F-F	G-G