

FURGUT**Rotary Vane Pump Model DC/04/20**

3VDC to 24VDC Powered Rotary Vane Pumps, Gas Flow to 2 LPM

DESCRIPTION

This rotary vane pump series is an excellent pressure/vacuum source for gas analyzers, medical devices, process samplers and other analytical instrument applications. Also useful for material handling and many general automation applications with Non-Toxic and Non-Explosive gases.

The pump is quiet, reliable and mounts in any position. The units operate oil free. The pump vanes have an estimated service life of 1,000 hours and are easily field replaced without special tools.

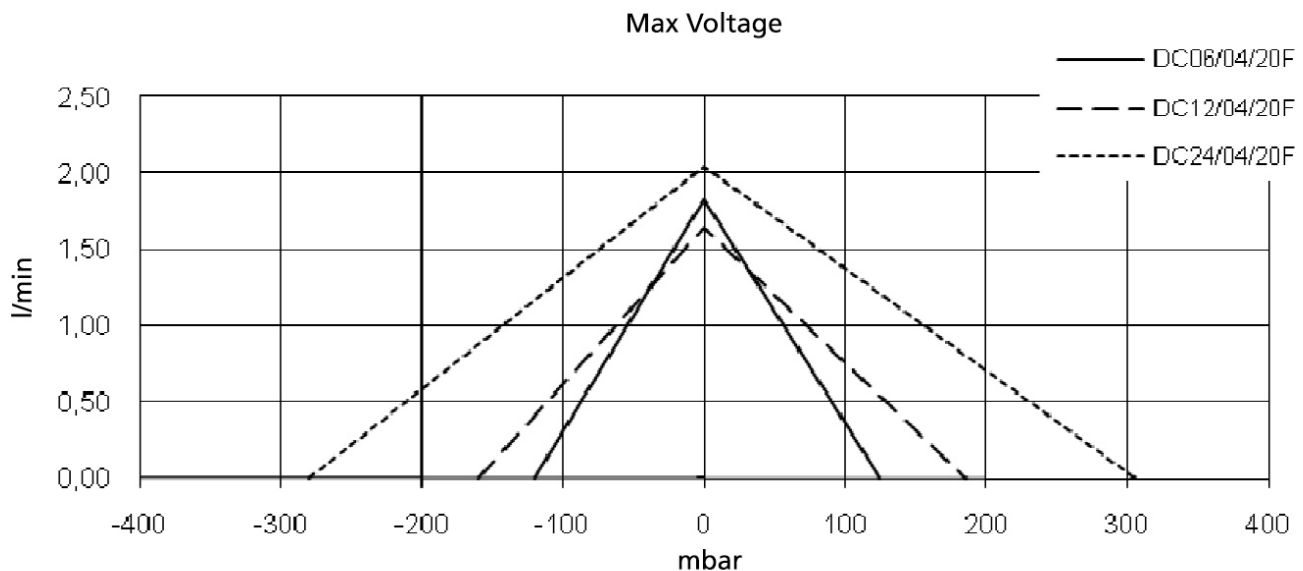
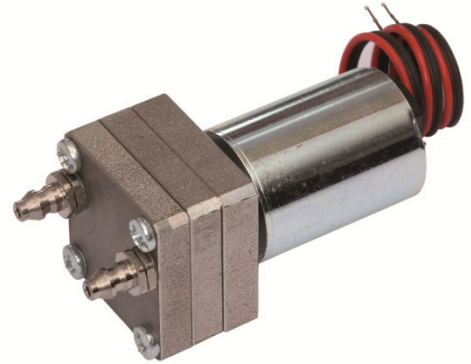
SPECIFICATIONS

Maximum Flow- 2 LPM
 Maximum Differential pressure- 305 mbar
 Vane Material- Carbon
 Media- inert gases
 Weight- 57g

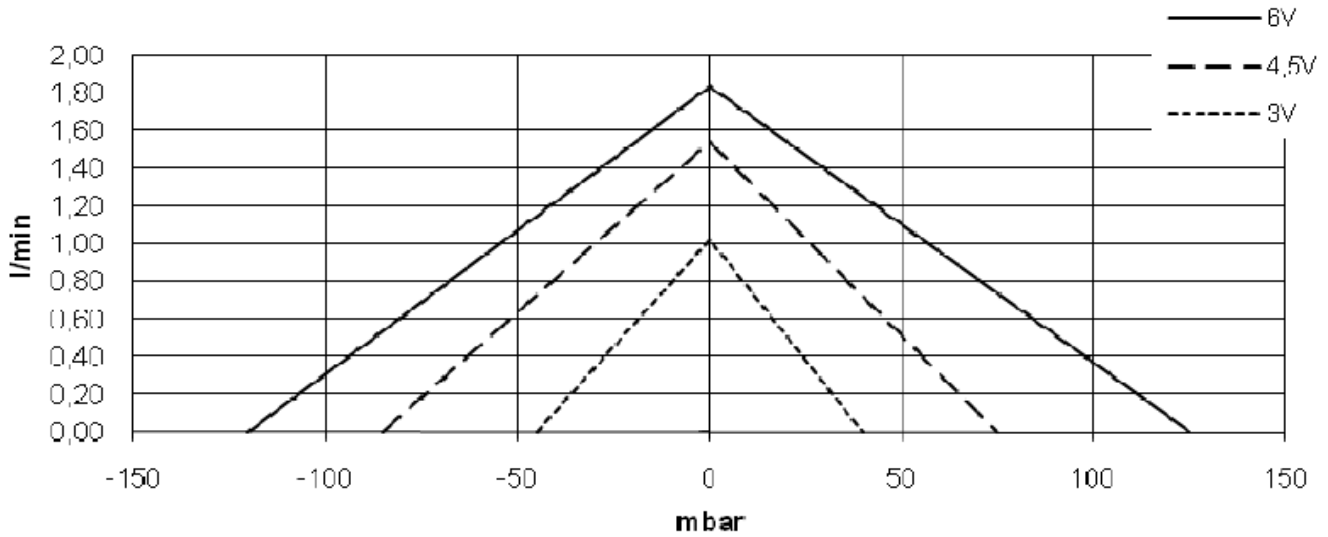
NOTE

Operation at a somewhat lower than pump design voltage will yield a significantly longer life of the motor and the pump while also decreasing the current draw and operating noise of the unit.

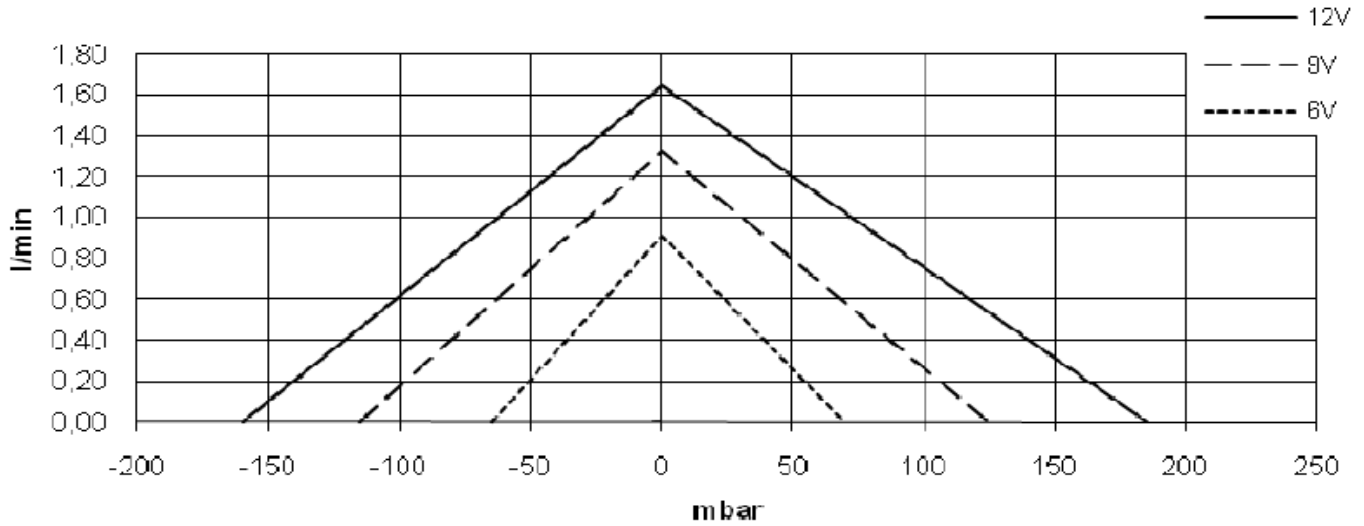
If used for continuous operation, we recommend selection of a pump that has a slightly higher pumping capacity than needed during normal operation.



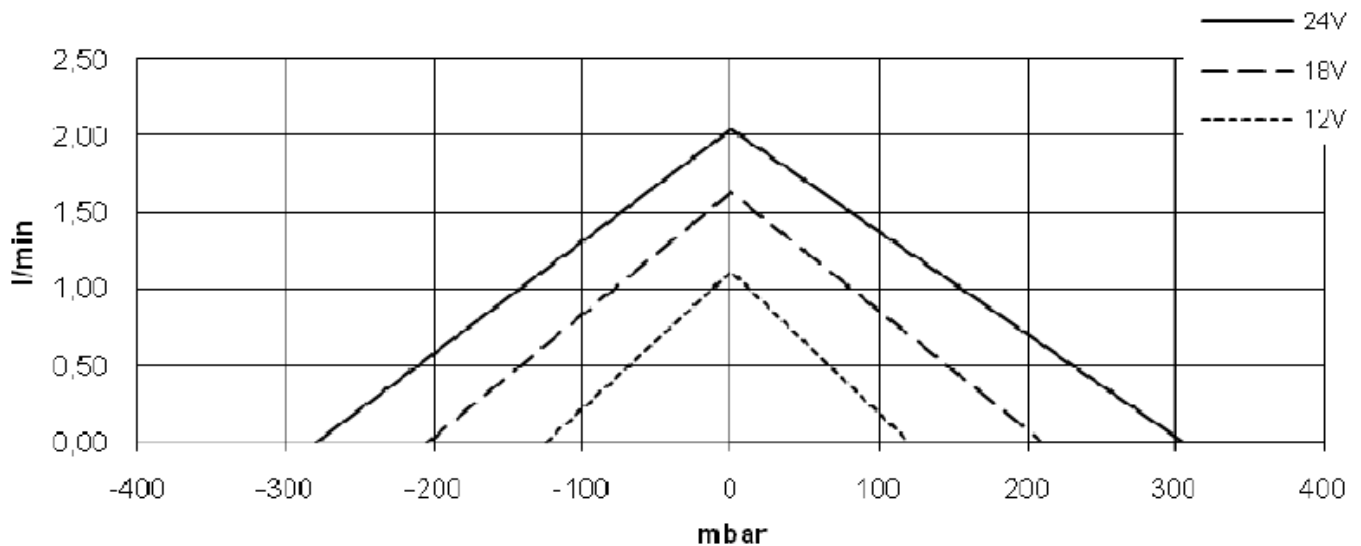
Type/Model: DC06/04/20F



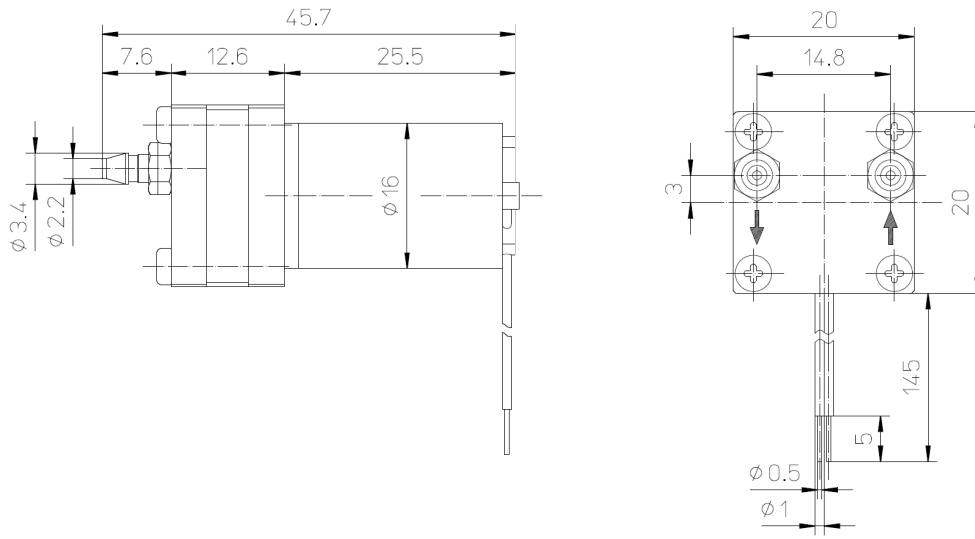
Type/Model: DC12/04/20F



Type/Model: DC24/04/20F



DIMENSIONS (MM)



Model	Weight	Current mA	Voltage V	Flow l/min	Vacuum				Pressure			
					current		[-] mbar	noise level dB(A)	current		[+] mbar	noise level dB(A)
					min. mA	max. mA			min. mA	max. mA		
DC06/04/20F Art.-Nr.: 13300	57	370	6,0	1,8	205	300	120	60	205	320	125	63
			4,5	1,5	145	225	85	57	145	230	75	58
			3,0	1,0	85	140	45	49	85	145	40	51
DC12/04/20F Art.-Nr.: 15317		320	12,0	1,6	130	190	160	72	130	205	185	63
			9,0	1,3	90	145	115	64	90	150	125	59
			6,0	0,9	55	90	65	61	55	70	70	54
DC24/04/20F Art.-Nr.: 16312		140	24,0	2,0	95	155	280	67	100	170	305	65
			18,0	1,6	70	115	205	63	70	120	210	60
			12,0	1,1	45	75	125	56	50	80	120	55