

GOTEC

Rotary Vane Pump - VP 100M Rotary Vane

DESCRIPTION

The VP vane pump is self-priming and delivers a virtually constant flow rate.

At a speed of 2000 rpm, achieving a flow rate of over 120 l/h (31 gph). The maximum pressure is 10 bar (145 psi). The pump body is made of stainless steel. It's graphite bearings and stainless steel rotor make it suitable for a wide range of liquids.

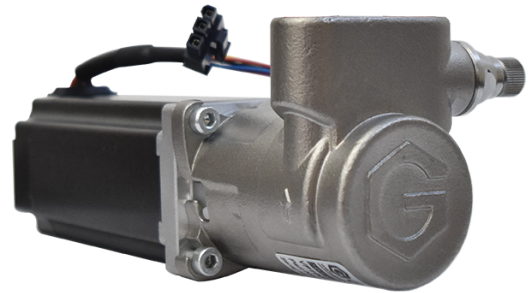
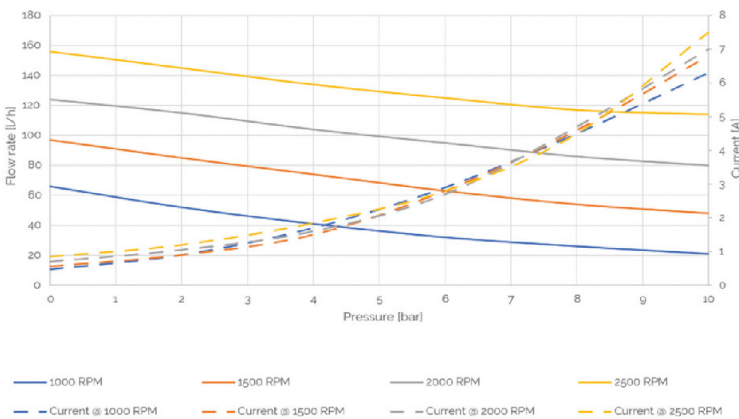
It has an adjustable bypass valve to protect it from temporary overpressure. The VP pump has been designed for performance, durability and produce low noise.

It is NSF 169 certified and complies with EU Regulation 1935/2004.

FEATURES

- Elevated Pressure Ranges
- Noise Level less than 52 dBA
- Certifications: NSF-169
- Lifetime Test: > 3000 hours
- Motors: 24 VDC (54 and 90W)

FLOW RATE PERFORMANCES



SPECIFICATIONS

GENERAL

Max. pressure	10[bar]
Max. flow rate (at 2'000 RPM)	≥ 120[L/h]
Pump housing	Stainless steel
Hydraulic connectors	G 1/4", NPT 1/4" (ON REQUEST)
Rotor	Stainless steel
Bearings & vanes	Graphite
Sealings	EPDM, FKM, FFKM
Overpressure security	Overload valve
Weight	~1200[g]
Fluid temperature	1...70[°C]
Motorization	Brushless motor 24 VDC, 90 [W]
Certification	NSF & CE 1935/2004

DIMENSIONS

