

**BOXER**

**Boxer 3K Series Diaphragm Pump Gas**

Gas Flow Rate to 8.5 l/m

**DESCRIPTION**

The 3K series is an extremely compact, robust, and versatile single headed gas diaphragm pump. High quality connection rod and motor bearings combined with slow speed contribute to maximum operational life and lowest power consumption. This series is offered with a quality brushed and versatile brushless motor. Like all other pumps in the Boxer range, this series can be customized to specific OEM requirements.



**FEATURES**

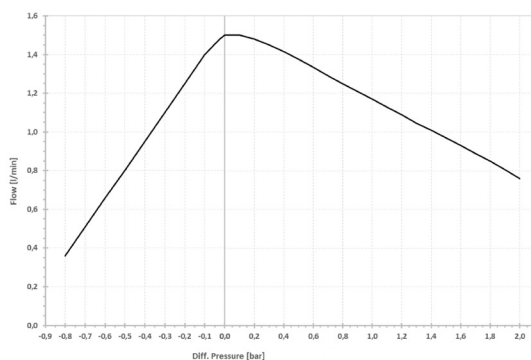
- BLDC versions at same costs as brushed DC
- approx. 1500 rpm with speed control 0 to 5V
- speed feedback signal (1 pulse per revolution) output
- single, double, and quad heads

**SPECIFICATIONS**

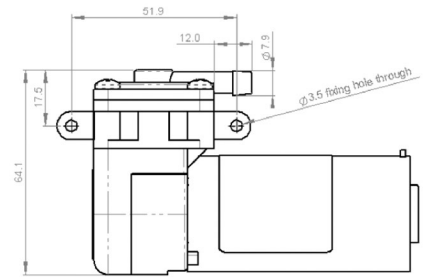
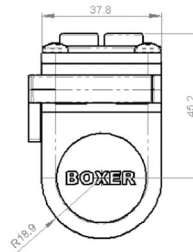
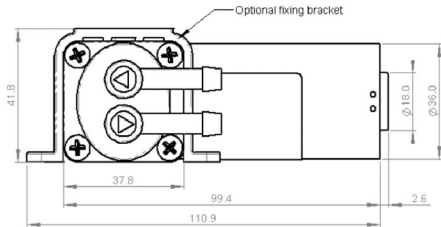
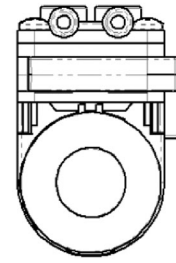
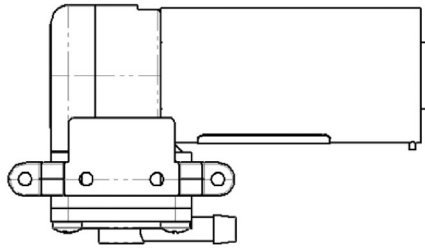
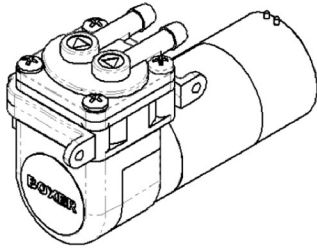
**GENERAL**

Free Flow	8.5 l/m Brushed, 7.3 l/m Brushless
Max Pressure	2.0 Bar (29 PSI)
Max Vacuum	-740 mbar Brushed, -750 mbar Brushless
Motor	12 & 24 Volt; DC & BLDC
Housing Material	PPS (Polyphenylene Sulphide)
Diaphragm Material	EPDM (other materials available)
Valve Material	EPDM/Silicone (other materials available)
Tubing Connection	Suitable for 6 mm ID tubing
Eccentric	2.0 mm (0.8 & 1.0 mm options)
Max. Ambient Temp	50°C
Max Media Temp	100°C
Weight	385 g

**FLOW CURVE**



## A. BRUSHED DIMENSIONS



## ORDERING INFORMATION

Model	Motor Type	Nominal Motor Voltage (VDC)
3111.650	Brushless	12
3111.660	Brushless	24
3111.129	Brushed	12
3111.252	Brushed	24