

GOTEC

## EDS 03 Miniature Diaphragm Pump

Solenoid Operated, Flow to 7 l/h, Pressure to 0.25 Bar (3.63 PSI)

### DESCRIPTION

Model EDS 03 pump is ideally suited for transfer of compatible liquid media at low pressures and flow rates.

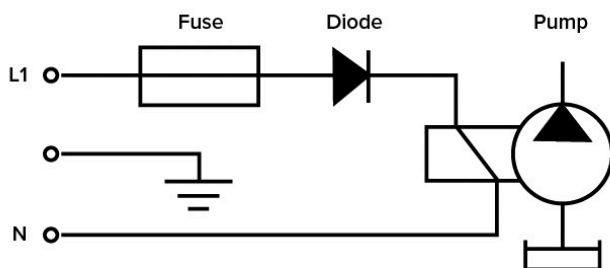
The pump operation is straight forward with a solenoid moving a diaphragm within a plastic housing that has opposing duckbill check valves mounted in the pump inlet and outlet. The diaphragm and check valve material is EPDM. Inlet and outlet connections are barbed hose type and the pump housing rotates to best orient the barbs to the most suitable mounting position.

The pump is useful for many fluid transfer applications in equipment for HVAC, Medical, Automated Chemistry, and General Automation Applications.

### FEATURES

- Inert Wetted Parts
- Simple Opposing Check Valve Operation
- Small Size
- Easy Mounting
- Rated for Continuous Duty
- Low Power Consumption

### ELECTRICAL WIRING

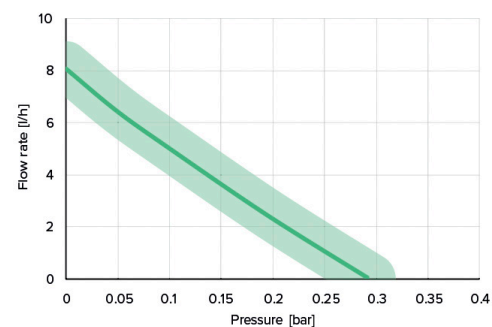


### SPECIFICATIONS

#### GENERAL

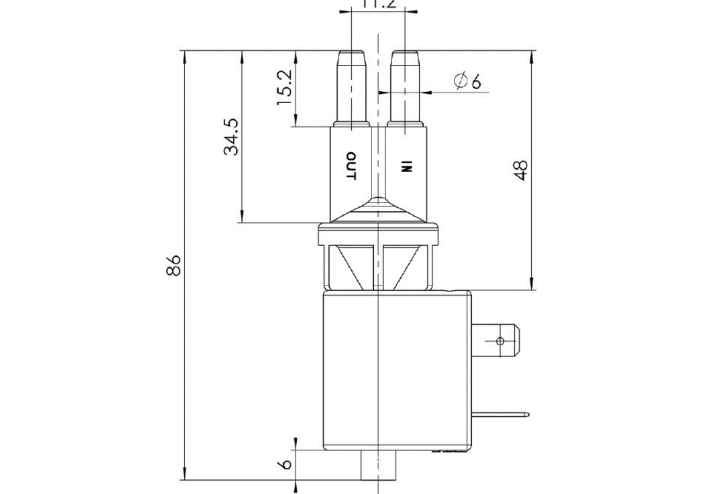
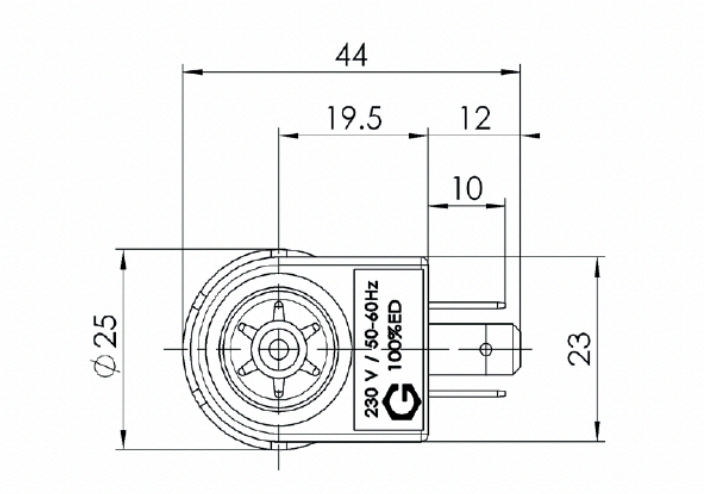
Max. pressure	0.25[bar]
Max. flow rate	7[l/h]
Max. suction height	1[m]
Viscosity range	1...600[mm <sup>2</sup> /s]
Filter	Mesh 100
Tension	230[V] (12, 24, 110V)
Frequency	50, 60[Hz]
Electrical connection	2 x 6.3 x 0.8 [mm]
Power	18[W]
Weight	~90[g]
Temperature	1...50[°C]
Insulation	Class F Class 1
	100% ED / 20 [°C]

### FLOW CURVE/PERFORMANCE CURVE/ETC.

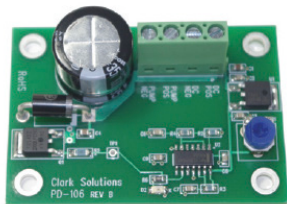


\*\* Tested with 20°C of water at ambient temperature

DIMENSIONS



PD-106 Driver Board



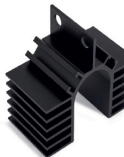
Model PD-106 is a board level product intended for mounting in a customer provided enclosure. It is intended for use with Gotec solenoid piston pumps to drive the pumps with pulsed DC power.

The board accepts 9-35 VDC input and has a pulsed 9-35 VDC output.

The pulse length is fixed at a nominal 10ms and the dead time between pulses is adjustable via a potentiometer.

The circuit can drive pumps up to 35 volts.

ACCESSORIES



Heating sink

\*\* Large choice of materials & options

ORDERING INFORMATION

Model	Description
EDS-03-24V	Pump with 24V Solenoid
EDS-03-110V	Pump with 110V Solenoid

Caption with additional ordering information.  
Special materials and connections are available in OEM quantities. Please consult us.

Options			
Model	Description	Model	Description
106628	Heat Sink	PD-106	DC Driver board, 9-35V pulsed DC out
1N5406	Diode		