

FURGUT

Pressure/Vacuum Pump Model Series 80L

DC Powered Rotary Vane Pumps, Gas Flow to 8.6 LPM

DESCRIPTION

These rotary vane pumps are an excellent pressure/vacuum source for gas analyzers, medical devices, process samplers and other analytical instrument applications. They are also useful for material handling and many general automation applications.

The pumps are quiet, reliable and mount in any position. The units operate oil free. The pump vanes have a service life of 1,000 hours and are easily field replaced without special tools.

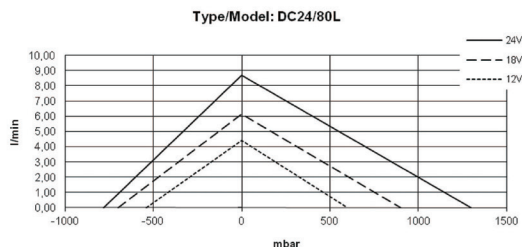
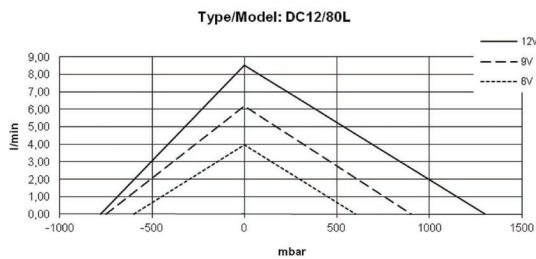
FEATURES

- Quiet operation
- Oil-free
- Easy maintenance

APPLICATIONS

- Gas analyzers
- Medical devices

FLOW RATE PERFORMANCES



SPECIFICATIONS

GENERAL

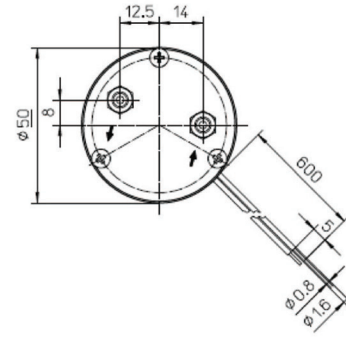
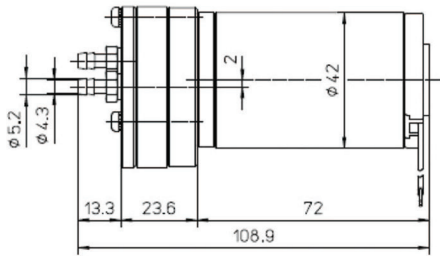
Maximum Differential Pressure	1300 mbar
Maximum Flow	8.6 LPM
Vane Material	Carbon
Media	Inert non-explosive gases

Note:

** Operation at a somewhat lower than pump design voltage will yield a significantly longer life of the motor and the pump while also decreasing the current draw and operating noise of the unit.

** If used for continuous operation, we recommend selection of a pump that has a slightly higher pumping capacity than needed during normal operation.

DIMENSIONS (MM)



ORDERING INFORMATION

Model/ Order Code	Nominal Current (A)	Voltage (V)	Max. Flow (L/min)	Vacuum				Pressure				Weight (kg)
				Current		Vacuum (mbar)	Noise Level (dBA)	Current		Pressure (mbar)	Noise Level (dBA)	
				Min (A)	Max (A)			Min (A)	Max (A)			
DC12/80L No. 15982	1.9	12.0	8.5	1.4	2.0	780	78	1.3	4.3	1300	81	0.69
		9.0	6.1	1.1	1.9	750	74	1.1	3.3	900	73	
		6.0	3.9	0.8	1.6	600	66	0.8	2.1	600	64	
DC24/80L No. 16984	0.9	24.0	8.5	0.6	1.0	700	81	0.6	2.1	1300	72	0.69
		18.0	6.1	0.5	1.0	700	77	0.5	1.8	900	67	
		12.0	4.4	0.4	0.8	540	70	0.4	1.1	600	58	